



City of
Greater Geraldton
a vibrant future



Non-self-contained Motorised Camper Vehicle Strategy



63 Cathedral Avenue
Geraldton WA 6530
T 08 9956 6600 **F** 08 9956 6674
E council@cgg.wa.gov.au
W www.cgg.wa.gov.au

Acknowledgements

Council wishes to thank all contributors and stakeholders involved in the development of this document.



Disclaimer

Information contained in this document is based on available information at the time of writing. All figures and diagrams are indicative only and should be referred to as such. While the City of Greater Geraldton Council has exercised reasonable care in preparing this document it does not warrant or represent that it is accurate or complete. Council or its officers accept no responsibility for any loss occasioned to any person acting or refraining from acting in reliance upon any material contained in this document. *Details updated 28 April 2023. The information contained in this document will be updated from time-to-time on the City website.*

Contents

1. Non-self-contained motorised camper vehicles	2
1.1. Definition of a non-self-contained motorised camper vehicle	2
1.2. Background: The City of Greater Geraldton Travellers Support Policy	2
1.3. Support for all types of vehicles in the Travellers Support Policy.....	2
1.4. Support for non-self-contained motorised camper vehicle.....	2
2. Facilities for non-self-contained motorised camper vehicles	3
2.1. 24 Hour Free parking	3
2.2. Caravan Parks and Basic Parks in the CGG.....	3
2.3. Other parking facilities.....	4
3. Other Support.....	4
Attachment 1: Resources for RV Travellers.....	5
Attachment 2: Caravan Parks and Basic Parks	10



1. Non-self-contained motorised camper vehicle

1.1. Definition of a non-self-contained motorised camper vehicle

This includes motorised camping vehicles of all types other than self-contained recreation vehicles as defined in the Travellers Support Policy. It includes vehicles with a roof-rack mounted camping facilities. For camping site compliance purposes also includes trucks, buses, vans, utility vehicles, station wagons, or sedans, in which people elect to sleep overnight. Excludes all towed caravans or towed camper trailers.

1.2. Background: The City of Greater Geraldton Travellers Support Policy

The City of Greater Geraldton (City) Travellers Support Policy (CP 2.4: CCS310) was adopted by Council on 27 February 2018, with the objective to maximise economic activity from trade with travellers. The rationale of this Policy is to generate trade, support employment and inject revenue into the local economy through the provision by the City of the appropriate facilities and amenities, and the provision by the private sector of transport options, accommodation, hospitality, fuel, supplies and comprehensive commercial products and services.

1.3. Support for all types of vehicles in the Travellers Support Policy

Section 5.1 of the Travellers Support Policy outlines the following support for all types of vehicles:

- Liaison and coordination with the WA State Government Department of Transport/Main Roads in the planning and delivery of State highways and associated infrastructure and facilities (including location and development of passing lanes, rest areas, and location of fuel and service stations).
- Planning, development and maintenance of Local Government roads.
- Planning, development and maintenance of car parking facilities.
- Facilitating commercial accommodation and hospitality development in the City, to ensure accommodation and food options are available for travellers.
- Facilitating the provision of commercial caravan and camping parks offering self-contained or other cabin options, communal shared toilet, shower and laundry facilities, with powered/serviced and unpowered/non-serviced caravan, trailer, car-top or tent site options.
- Provision of designated public camping sites.
- Regular patrolling by City Rangers of designated public camp sites to manage free overnight camping privileges.
- Regular patrolling of all other public space areas to manage illegal camping and encourage legal camping at commercial or designated public camp sites.

1.4. Support for non-self-contained motorised camper vehicles

- Facilitating the provision of commercial caravan and camping parks.
- Provision of designated public camping sites

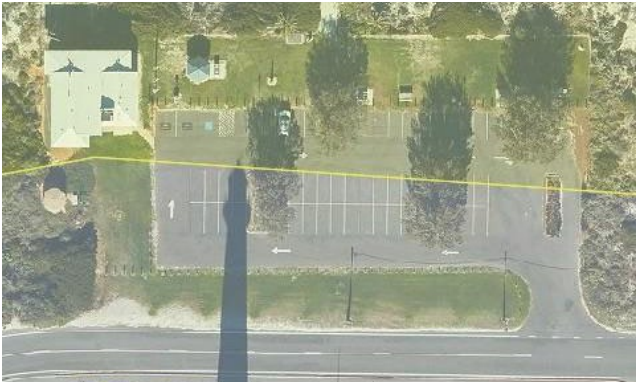
2. Facilities for non-self-contained motorised camper vehicles

2.1. 24 Hour Free parking

Designated, free 24-hour parking facilities are available for non-self-contained motorised camper vehicles at the Point Moore parking lot and John Batten Community Hall parking lot located in Drummond Cove. These locations have access to toilets, showers, waste facilities and public barbecues.

Please refer to Map 1: Point Moore parking lot and map 2: John Batten Community Hall parking lot. Signage will be erected to indicate parking bays in which non-self-contained camper vehicles are allowed free 24-hour parking and the use of these facilities will be monitored by City Rangers.

Map 1: Point Moore parking lot



Map 2: John Batten Hall Drummonds Cove parking lot



2.2. Caravan Parks and Basic Parks in the CGG

Non-self-contained motorised camper vehicles may also overnight at caravan parks or basic parks in the City. Information on these facilities is on the Visitor Centre website, and hard copies are available, which are updated annually. Details are included in Attachment 2.

Caravan parks include:

- African Reef Caravan Park
- Geraldton Caravan Park
- Belair Gardens Caravan Park
- Drummond Cove Holiday Park
- Double Beach Holiday Park
- Mullewa Caravan Park
- Sunset Beach Holiday Park Geraldton

Basic camps include:

- Coronation Beach
- Ellendale Pool
- Fig Tree Crossing

2.3. Other parking facilities

Designated parking spaces for larger vehicles are available at the following locations.

2.3.1. CGG Carpark No 5, opposite Stirlings Centre. See Map 2.

Map 2: CGG Carpark No 5 designated RV parking



3 Other Support

A resource guide has been developed for RV travellers, which is included in Attachment 1: Resources for RV Travellers. This guide is available on the Visit Geraldton Website.

Attachment 1: Resources for RV Travellers

MEDICAL FACILITIES AND SERVICES

HOSPITALS

- Geraldton Regional Hospital (Public) (Emergency Room facilities)
Shenton Street (off Cathedral Avenue)
Phone: 08 9956 2222 - www.health.wa.gov.au
- St. John of God Hospital (Private)
Hermitage Street (off Cathedral Avenue)
Phone: 08 9965 8888 - www.sjog.org.au

MEDICAL CENTRES

- Batavia Health
361 Marine Terrace - Phone: 08 9965 8100 - www.bataviahealth.com.au
- Midwest Aero Medical
Suite 3, 12 Urch Street, Beresford - Phone: 08 9956 8999
- Panaceum
Panaceum Geraldton: 233 Lester Avenue - Phone: 08 9920 8111 - www.panaceum.com.au
- Panaceum Seacrest: T10/75 Barrett Dr, Wandina – Phone: 08 9923 9999
University Medical Practice
- Bill Sewell Complex, 192 Chapman Road – Phone: 08 9923 9999

DENTISTS

- A 2 Z Dental
91 Carson Terrace - Phone: 08 9965 4437
- Cathedral Dental Clinic
129 Cathedral Avenue - Phone: 08 9964 5488 - www.cathedraldental.com.au
- Chapman Rd Dental Clinic
100 Chapman Road - Phone: 08 9964 3577
- Fitzgerald Dental Clinic
139 Fitzgerald Street - Phone: 08 9921 4795 - www.fitzgeraldental.com.au
- Bluff Point Dental Clinic
436 Chapman Rd - Phone: 08 9943 8484 - <https://bluffpointdental.com.au/>

CHEMISTS

- Amcal Pharmacy
Stirlings Shopping Centre, 54 Sandford Street - Phone: 08 9921 6005
- Blooms The Chemist
114 Marine Terrace - Phone: 08 9921 1755
- Optimal Pharmacy
Northgate Shopping Centre, Chapman Road - Phone: 08 9921 6455
- Optimal Pharmacy
Glenfield Shopping Centre, 582 Chapman Road – Phone: 08 9938 3274
- Chemist Warehouse Geraldton
134 Marine Terrace, Geraldton – Phone: 08 9921 4151

TOURISM SERVICES / INFORMATION

- Geraldton Visitor Centre
24 Chapman Road, Geraldton, Western Australia, 6530 Phone: 08 9956 6670
Email: info@visitgeraldton.com.au
Website: www.visitgeraldton.com.au
- Central Greenough Historical Settlement Visitor Centre
Brand Highway Greenough - Phone: 08 9926 1084
- Mullewa Community Resource Centre
Corner Maitland Street & Jose Street Mullewa - Phone: 08 9961 500
Email: Mullewa@crc.net.au
Website: www.visitmullewa.com.au
- City of Greater Geraldton
63 Cathedral Avenue - Phone: 08 9956 6600
Website: www.cgg.wa.gov.au

FOOD

SUPERMARKETS

IGAs

- Glenfield, 582 Chapman Road - Phone: 08 9938 1250
- Queens IGA, 79 Durlacher Street - Phone: 08 9921 7044
- Rigtters, 179 Durlacher Street - Phone: 08 9921 2307
- Wonthella, 252 Fifth Street - Phone: 08 9921 4798

Coles

- Northgate Centro Shopping Centre, Chapman Road - Phone: 08 9921 6598

Woolworths

- Stirling's Shopping Centre, 54 Sandford Street - Phone: 08 9949 9200
- Seacrest Shopping Centre, 75 Barret Drive, Wandina – Phone: 08 9960 8200

ALDI

- 46 North West Coastal Hwy, Wonthella - Phone: 13 25 34

DELIS

- Bluff Point Shopping Centre, Chapman Road, Bluff Point - Phone: 08 9923 1078
- Deloro, Chapman Road, Waggrakine - Phone: 08 9938 1030
- Green Street, Spalding - Phone: 08 9923 2711

BUTCHERS

- Gearing Butchers, Shop 8, Tarcoola Shopping Centre - Phone: 0455 216 566
- Gearing Butchers, 429 Chapman Road – Phone: 0448 231 545
- Mick Davey Butchers, 165 Marine Terrace - Phone: 08 9921 2076
- The Whole Hog, Northgate Centro Shopping Centre - Phone: 08 9921 5161

LOCAL FISH AND CRAYFISH

- Seafood Department of Queens IGA, 79 Durlacher Street - Phone: 08 9964 7044
- Latitude Fisheries, 57 Connell Road, Fishermans Wharf - Phone: 08 9964 3470
- Brolos Fresh, 70 Connell Road, West End – Phone: 08 9965 9033 – Live lobsters

FRESH PRODUCE

- Geraldton Fruit and Vegetable Supply, 54 Gregory Street - Phone: 08 9921 2940
- Sunday Market, Old Railway Station, Chapman Road - 8.00am to Noon

AUTOMOTIVE & CARAVAN SERVICES

MECHANICS

- Axis Autos Service Centre, 284 Marine Terrace - Phone: 08 9921 2411
- Cams Auto Repairs, 3 Gray Street - Phone: 08 9964 4286
- Geraldton Ultratune, Unit 2/179 Northwest Coastal Highway - Phone: 08 9921 1899
- Graeme Hosken Autos, 25 Bradford Street - Phone: 08 9921 5232
- O'Brien 4WD Centre, 124 Anderson Street - Phone: 08 9964 1068
- Southside Mechanical Services, 120 Northwest Coastal Highway - Phone: 9921 1162
- Wayne Poletti Automotive Centre, 14 Anzac Terrace - Phone: 08 9921 1729

AUTO ELECTRICIANS

- Craig's Auto Electrical, 10 Larkin Street - Phone: 08 9921 4723
- Geraldton Auto Electrical, 22 Boyd Street - Phone: 08 9921 4322
- Pages Auto Electrical Services, 379 Marine Terrace - Phone: 08 9921 2956
- R & M Auto Electrical, 211 Shenton Street - Phone: 08 9921 7002
- Sea Breeze Auto Electrics,

AIR CONDITIONING See Auto Electricians

TYRES

- Beaufort, 141 Flores Road, Webberton - Phone: 08 9921 5466
- Bridgestone, Northwest Coastal Highway - Phone: 08 9921 5589
- Tyrepower, Corner Chapman Road & Forrest Street - Phone: 08 9921 4144

CAR DEALERS

- Geraldton Toyota, 339 Marine Terrace - Phone: 08 9964 1000
- Midwest Auto, 5 Phelps Street - Phone: 08 9938 0505
- Young Motors, Corner Cathedral Avenue & Lester Avenue - Phone: 08 9965 6999
- Youngs on the Highway, Northwest Coastal Highway - Phone: 08 9949 9770

CARAVAN REPAIRERS

- Batavia Coast Caravan Land, 215 Flores Road - Phone: 08 9923 1601
- Country Time Caravans, 152 Flores Road - Phone: 08 9964 4224

SOLAR PANELS, GENERATORS, INVERTERS, BATTERIES & CHARGERS (Sales & Repairs)

- Battery Mart, 100 Flores Road - Phone: 08 9964 8404
- Sun City Solar, 140 Flores Road, Webberton - Phone: 08 9965 4089
- Country Time Caravans, 152 Flores Road - Phone: 08 9964 4224 (generators)
- Geraldton Mower & Repairs, 130 Flores Road - Phone: 08 9964 4036 (generators)
- Getaway Outdoors, Homemakers Centre, 208 Northwest Coastal Highway - Phone: 08 9965 3766 (generators)

SERVICES

MOBILE PHONES

- Optus, Harvey Norman Geraldton, 18 Anzac Terrace, Geraldton – Phone: 08 9964 0111
- Telstra Shop, Northgate Shopping Centre, 110 Chapman Road, Geraldton - Phone: 08 9965 5770

FREE INTERNET & WIFI

- CBD Foreshore area with CGG Hotspot locations - Free Wi-Fi
- Geraldton Regional Library - Free Wi-Fi

POST OFFICE

- Geraldton PO, 50 Durlacher Street, open Monday to Friday 9am-5pm - Phone: 13 13 18
- Bluff Point LPO, Bluff Point Shopping Centre, Shop 8 429-437 Chapman Road, Bluff Point – Phone: 13 13 18 08 9934 6707

LAUNDROMATS

- Corner Fitzgerald Street & Marine Terrace

POTABLE WATER

- Water available at the Francis Street carpark RV Parking Bays (free). Next to the Esplanade and Geraldton Multipurpose Centre

RUBBISH DISPOSAL

- Meru Landfill, Landfill Road, Narngulu – Phone: 08 9923 3188

DUMP POINTS

- Batavia Coast Caravan Park, Hall Road (small charge)
- Belair Gardens Caravan Park, Marine Terrace (small charge)
- Drummond Cove Holiday Park, Northwest Coastal Hwy (small charge)
- Coronation Beach (free) 35km north
- Ellendale Pool (free) 45km south-east
- Fig Tree Crossing (free) 18km north-east
- Francis Street Dump Point (free). Next to the Esplanade and Geraldton Multipurpose Centre

TOILETS

- Corner Foreshore Drive and Forrest Street, Town Beach (Cubes)
- Glendinning Park off Glendinning Road
- Kempton Street, St George's Beach
- Marina at Wiebbe Hayes Lane
- Pages Beach off Marine Terrace
- Rest Centre, Foreshore Drive
- Spalding Park, Chapman Road Bluff Point
- Tarcoola Beach off Wilcock Drive
- Whitehall Road, Drummond Cove

SUPPLIES

WATER FILTERS

- Bunnings, Northwest Coastal Highway - Phone: 08 9965 9600
- Batavia Coast Caravan Land, 215 Flores Road - Phone: 08 9923 1601
- Country Time Caravans, 152 Flores Road - Phone: 08 9964 4224

CAMPING GEAR

- BCF, 175 Northwest Coastal Highway - Phone: 08 9921 3144
- Getaway Outdoors, Homemakers Centre, Northwest Coastal Highway - Phone: 08 9965 3766

HARDWARE

- Ag Services, 155 Flores Road - Phone: 08 9965 7909
- Bunnings, Northwest Coastal Highway - Phone: 08 9965 9600

OP SHOPS

- St Vincent De Paul, 114 Durlacher Street - Phone: 08 9921 7617
- Salvation Army, 20 Anzac Terrace - Phone: 08 9964 3667
- Red Cross, 202 Lester Avenue - Phone: 08 9921 5181
- Good Samaritans, 171 Northwest Coastal Highway - Phone: 08 9921 6961

FISHING

WHERE TO FISH

- Drummond Cove
- Marina Wharf
- Point Moore

FISHING TACKLE & BAIT

- BCF, 175 Northwest Coastal Highway - Phone: 08 9921 3144
- Getaway Outdoors, Homemakers Centre, Northwest Coastal Highway - Phone: 08 9965 3766
- Geraldton Sports Centre, 204-205 Marine Terrace - Phone: 08 9921 3664
- 440 Roadhouse, North West Coastal Highway - Phone: 08 9938 1334

PETS

PET MINDING SERVICES

- Catopia, 23 Ridley Road - Phone: 0448 553 443 / 08 9965 3443
- Paws 4 Thought, 45 Hall Road - Phone: 0407 088 612
- Barkavia Dog Retreat, 34449 Brand Highway - Phone: 0411 399 486
- Arthur Road Kennels, 218 Arthur Road, Walkaway - Phone: 0427 261 554
- TJ's House Pet Minding Services – Phone: 0455 964 643

PET SUPPLIES

- City Farmers, Shop 18, Homemakers Centre, Northwest Coastal Highway - Phone: 08 9921 2648
- Pet City Geraldton, 54 North West Coastal Hwy, Geraldton – Phone: 08 9923 9345

RADIO/TV

RADIO STATIONS

- Tourist Radio (88.0FM) - (Information for travellers)
- 6 TTT (97.3FM) - (Community Access Radio Station)
- ABC Midwest & Wheat belt (6GN 828 AM) - Part of the ABC Local Radio Network
- ABC Radio National 6ABCRN (99.7 FM) - Speciality talk and music
- Triple M (98.1 FM) – Free Internet radio, news, sports, music, audiobooks, and podcasts
- ABC News Radio - 6PNN (101.3 FM) – Rolling News bulletins, news magazine programs and LIVE coverage from Federal Parliament House of Representatives
- ABC Classic FM 6ABCFM (94.9 FM) - Classical and Jazz Music
- WAFM (96.5FM) - Top 40 Music
- The Spirit Network Radio 6BAY (FM 98.1 \ 1512 AM) - Classic Hits / Adult Contemporary Music
- Radio Mama (100.5FM) Indigenous Community station

TV STATIONS:

- Australian Broadcasting Corporation (ABC) - ABC1, ABC2, ABC3, ABC News 24 (digital channels)
- Special Broadcasting Service (SBS) - SBS One, SBS Two, SBS HD (digital channels)
- WIN Television, a dual affiliate of both the Nine Network and Network Ten
- GWN7 (Golden West Network), an affiliate of the Seven Network

WORK

- Grey Nomads Jobs www.greynomadsjobs.com.au/jobs

Attachment 2: Caravan Parks

CARAVAN PARKS		
Caravan Park	Address	Contact Details
African Reef Caravan Park	5 Broadhead Avenue, Tarcoola Beach	(08) 9964 5566 www.africanreef.com.au
Geraldton Caravan Park	239 Hall Road, Waggrakine	(08) 9938 1222 www.geraldtoncaravanpark.com
Belair Gardens Caravan Park (Top Tourist)	463 Marine Terrace, Beachlands	(08) 9921 1997 www.summerstar.com.au/caravan-parks/belair-gardens-geraldton
Drummond Cove Holiday Park	1633 North West Coastal Highway, Chapman Valley	(08) 9938 2524 www.drummondcove.com
Sunset Beach Holiday Park	4 Bosley Street, Sunset Beach	(08) 9938 1655 www.sunsetbeachpark.com.au
Double Beach Holiday Park	4 Hull Road, Cape Burney	(08) 9921 5845 www.doublebeach.com.au
Mullewa Caravan Park	Lovers Lane, Mullewa	(08) 9961 1161 www.visitgeraldton.com.au/accommodation/mullewa-caravan-park

Attachment 2: Basic Parks

BASIC PARKS		
Basic Park	Address	Contact Details
Coronation Beach	34km North of Geraldton, off North West Coastal Hwy	Caretaker on site www.chapmanvalley.wa.gov.au/visit-chapman-valley/where-to-stay-and-eat/places-to-stay.aspx
Ellendale Pool	45km on Walkaway Road.	Honesty Box https://www.visitgeraldton.com.au/play/natural-wonders.aspx
Fig Tree Crossing	17.5km East on Chapman Valley Road	Honesty Box www.chapmanvalley.wa.gov.au/visit-chapman-valley/where-to-stay-and-eat/places-to-stay.aspx

GERALDTON
TAKE A FRESH LOOK

9956 6670 DIAL 000 FOR EMERGENCIES
www.visitgeraldton.com.au





63 Cathedral Avenue
Geraldton WA 6530
T 08 9956 6600 F 08 9956 6674
E council@cgg.wa.gov.au
W www.cgg.wa.gov.au



City of
Greater Geraldton
a vibrant future

