

APPENDIX A

Maps of Areas of Conservation Value

All GIS analysis and mapping was prepared by the Perth Biodiversity Project.



Western Australian Planning Commission



Figure 1: Areas of Conservation Value – distribution of close up map titles

Figure 2: Areas of Conservation Value – Map 1 - Greenough River and Cape Burney

Figure 3: Areas of Conservation Value – Map 2 - Rudds Gully – Narngulu – Meru – Deepdale

Figure 4: Areas of Conservation Value – Map 3 – Geraldton City Centre – Deepdale

Figure 5: Areas of Conservation Value – Map 4 – Webberton – Glenfield – Waggrakine

Figure 6: Areas of Conservation Value – Map 5 – Buller – Parkfalls – Oakajee south

Figure 7: Areas of Conservation Value – Map 6 – Oakajee north

LEGEND - AREAS OF CONSERVATION VALUE (ACV's)

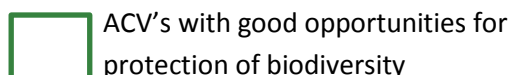
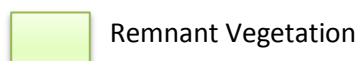
ACV's are those natural areas where analysis, based on current knowledge, shows that conservation efforts should be best directed to achieve the local biodiversity conservation objectives. The natural areas include areas with native vegetation, vegetated or open water bodies, waterways, springs, rock outcrops, coastal dunes or cliffs, bare ground or caves.

The ACV's boundaries are designed to be indicative only and include already cleared areas or even portions of areas where development has been approved. ACV's are not to be interpreted as areas where development is prohibited. They should be used to identify areas where any remaining vegetation is of conservation significance and its retention and protection should be a priority when deciding on future land use planning.

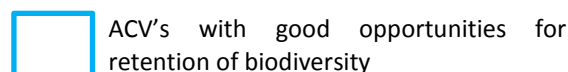


Areas of Conservation Value

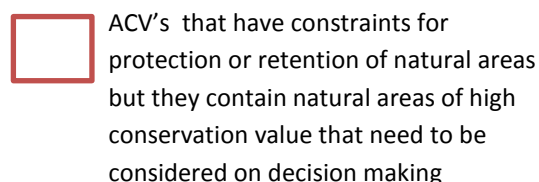
and a list of potential mechanisms to achieve biodiversity conservation outcomes within these areas



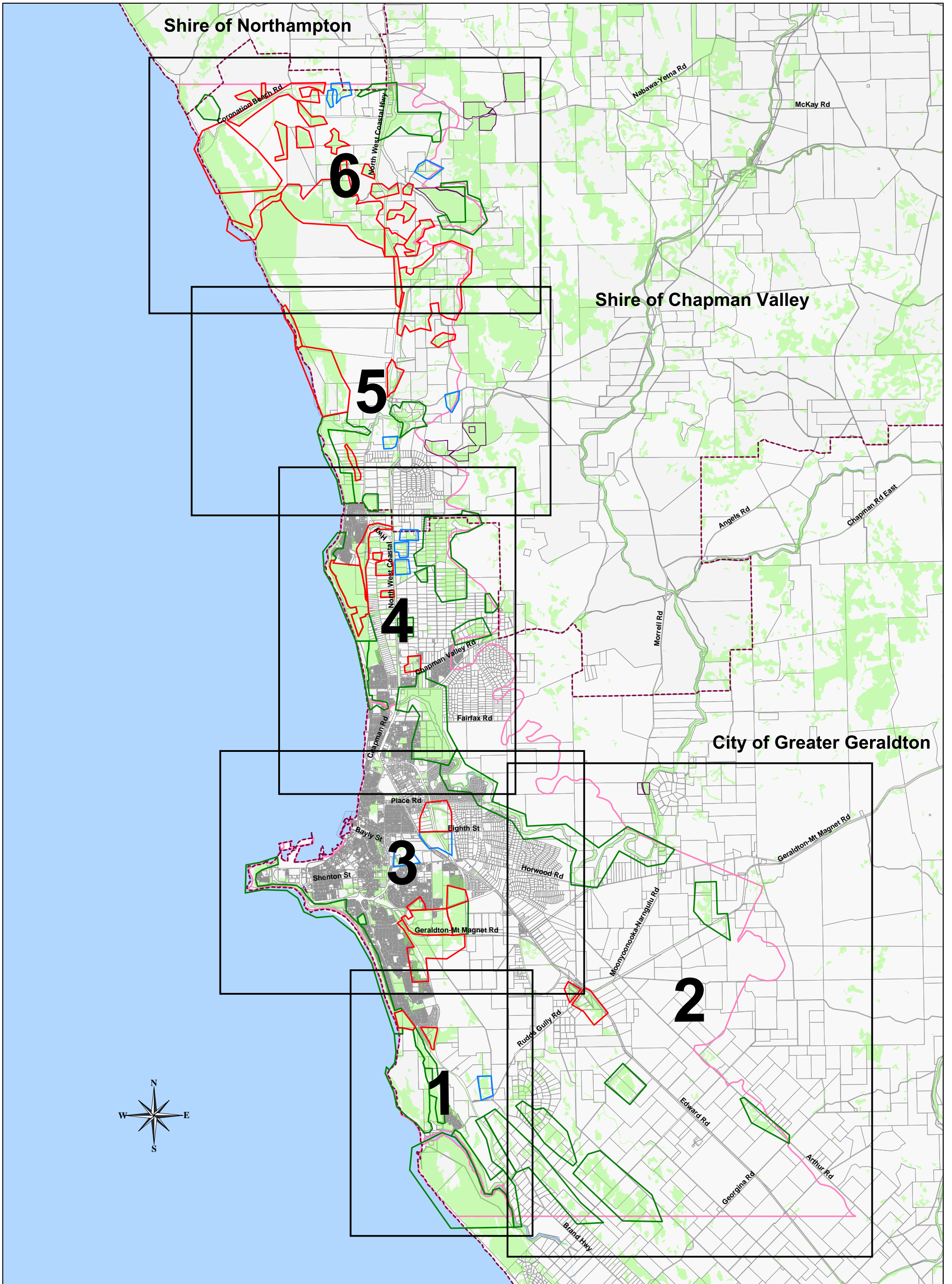
1. Review and implement existing management plans and conservation policies where they apply
2. Change zoning, vesting and reserve status to protection biodiversity values, where and when opportunities arise
3. Maximise the width of buffers and setbacks when re-zoning or planning for development
4. Strengthen regional and local linkages through protection, retention and revegetation
5. Design developments and apply conditions to development that achieve biodiversity conservation and management goals
6. Retain native vegetation in Public Open Space, streetscapes and transport corridors if development occurs
7. Direct recreational activities or facilities into cleared or severely degraded areas of Recreational reserves and fence and protect remnant vegetation
8. Develop and implement management plans for conservation areas
9. Continue or develop partnerships with community, private landholders and grant funders to implement conservation and regeneration
10. Develop support and incentive programs for private landholder conservation

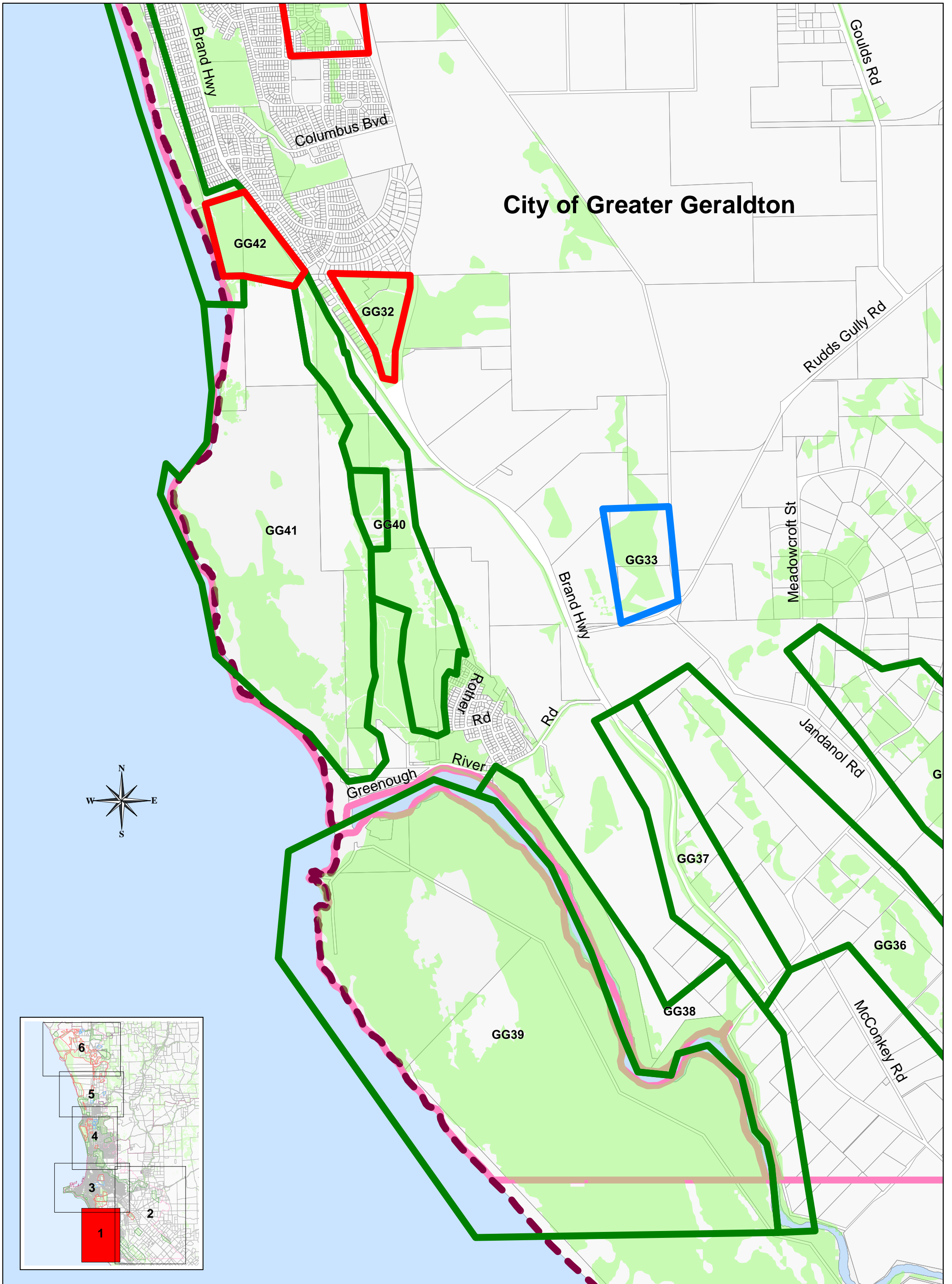


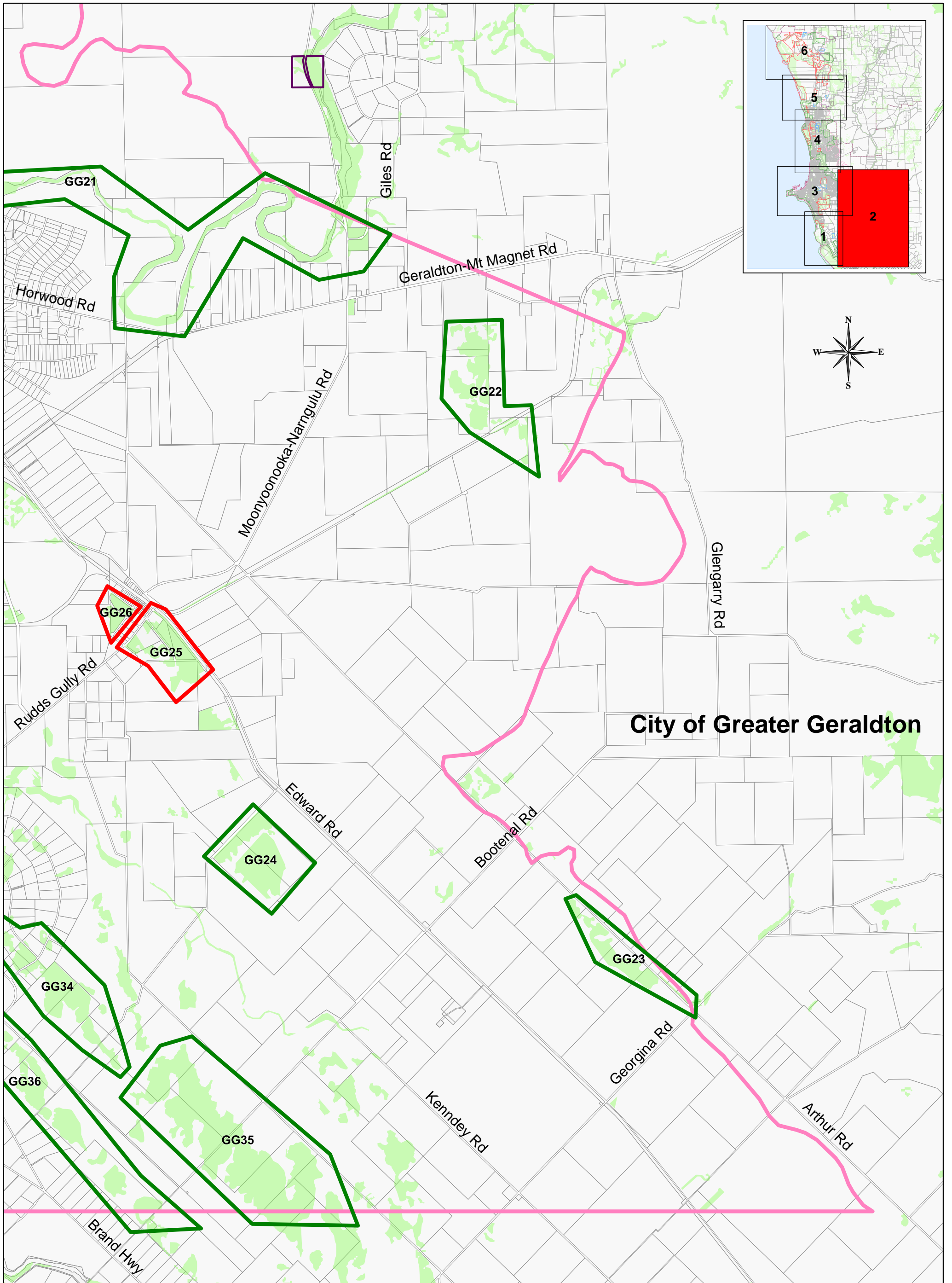
1. Maximise the width of buffer, setbacks and area of vegetation retained when re-zoning or planning for development
2. Design developments and apply conditions to development that achieve biodiversity conservation and management goals
3. Retain native vegetation in Public Open Space, streetscapes and transport corridors when development occurs
4. Develop support and incentive programs for private landholder conservation
5. Develop management plans and apply conservation policies where possible
6. Strengthen regional and local linkages through protection, retention and revegetation

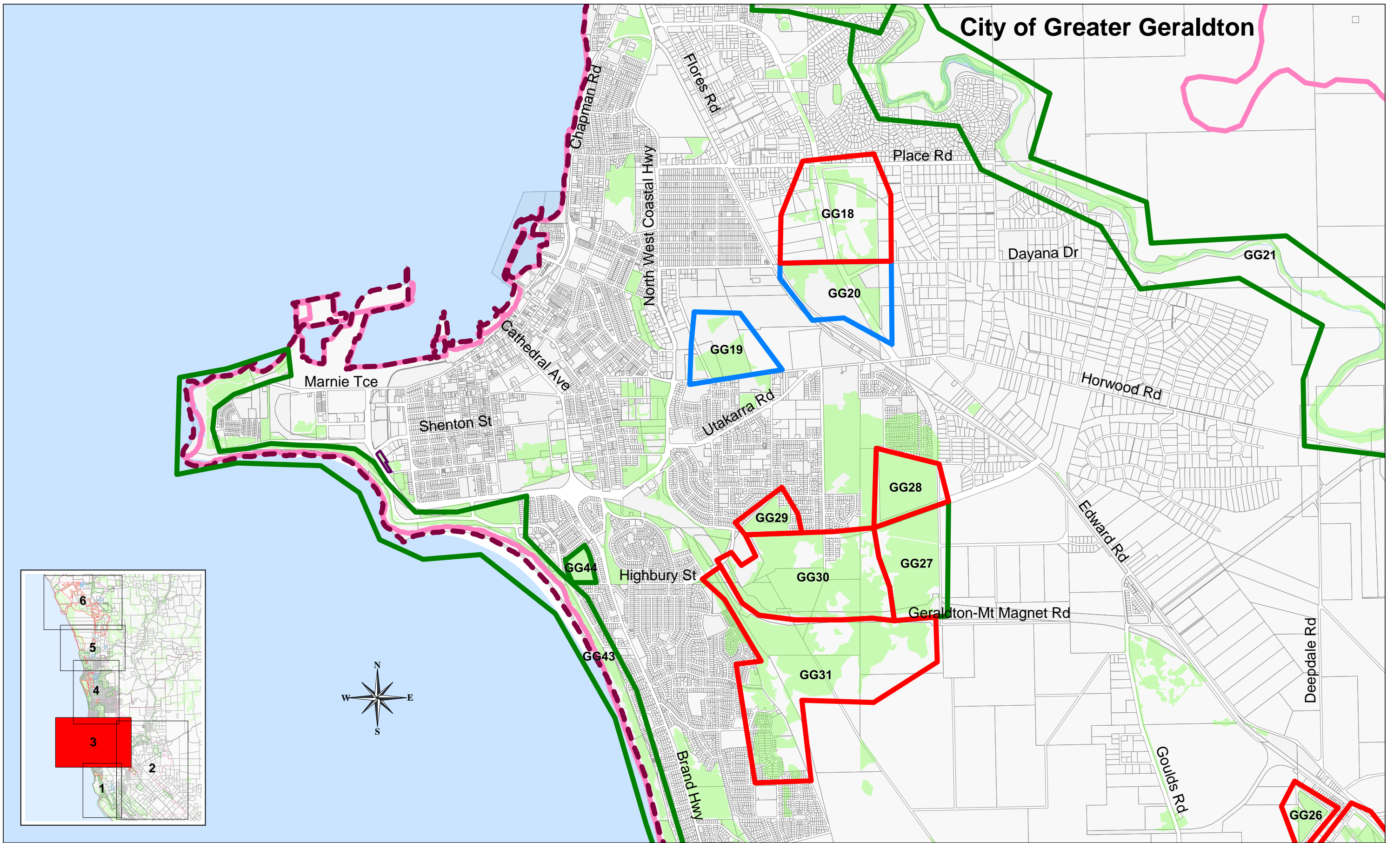


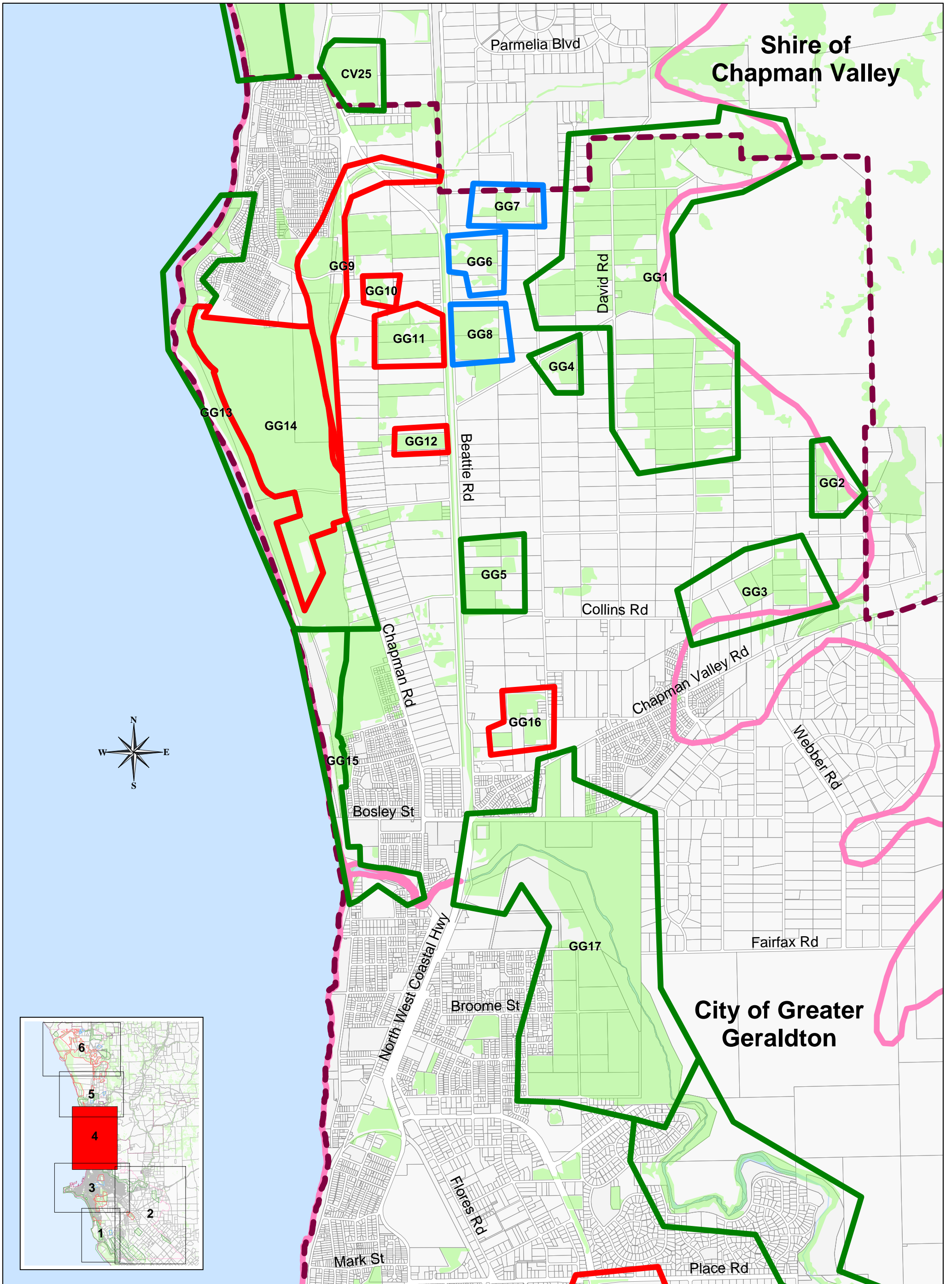
1. Maximise the width of buffer, setbacks and area of vegetation retained when re-zoning or planning for development
2. Retain native vegetation in Public Open Space, streetscapes and transport corridors.
3. Develop support and incentive programs for private landholder conservation

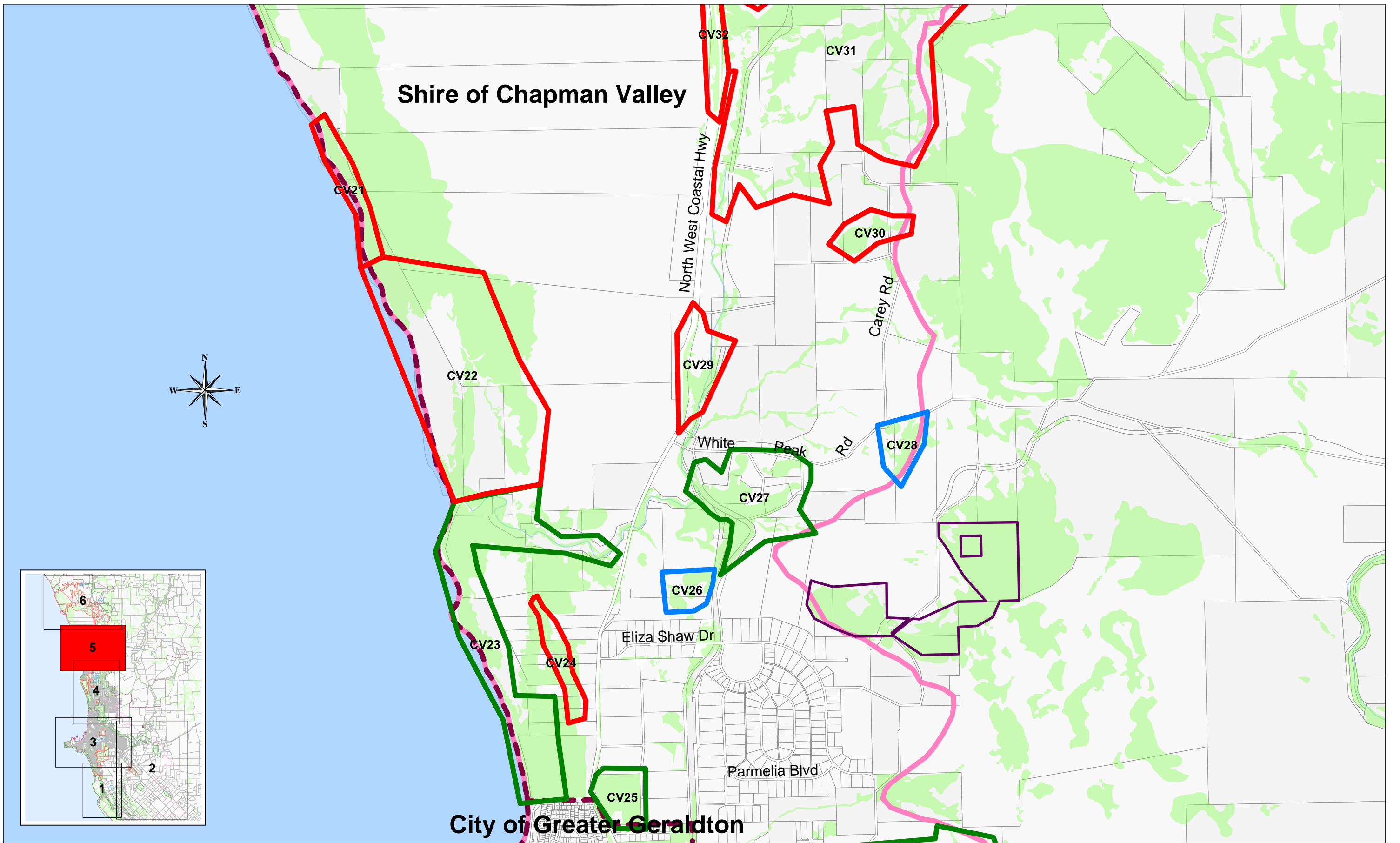








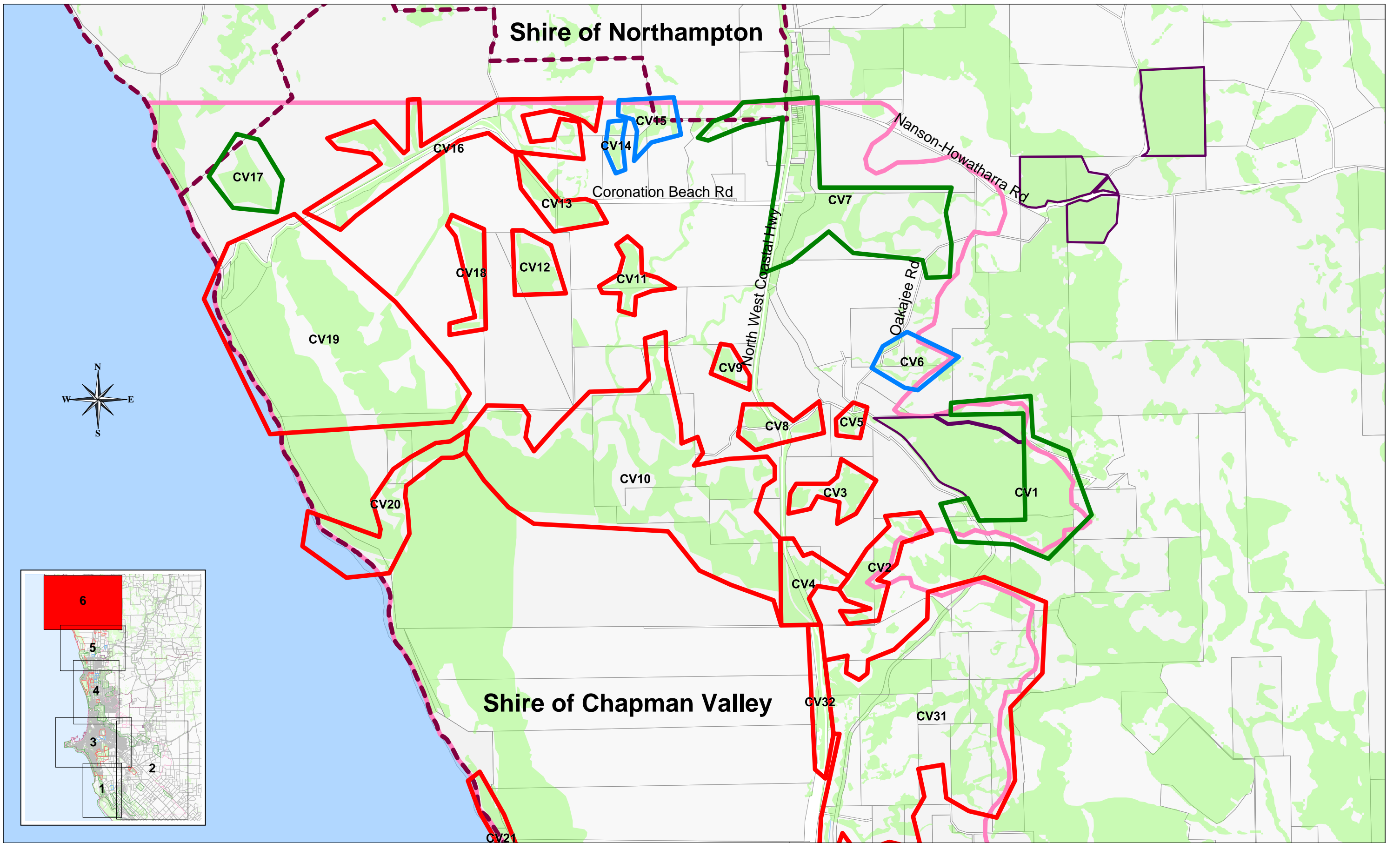




Local Biodiversity Strategy

FIGURE 6: Areas of Conservation Value
- Map 5 (Buller, Parkfalls & Oakajee South)

Scale 1:35,000 (A3)



Local Biodiversity Strategy

FIGURE 7: Areas of Conservation Value
- Map 6 (Oakajee North)

Scale 1:40,000 (A3)




Shire of
Chapman Valley
Love the Rural Life

Appendix B

Recommendations for each Area of Conservation Value (ACV)

Table 1 - ACV with GOOD opportunities for PROTECTION of natural areas.	2
Table 2 - ACV with GOOD opportunities for RETENTION of natural areas.	11
Table 3 - ACV with CONSTRAINED opportunities for PROTECTION or RETENTION of natural areas.....	14

Table 1 - ACV with GOOD opportunities for PROTECTION of natural areas.

These ACVs and their numbering correspond to the 'Protection' areas outlined in green: () on Figure 1-7 (Appendix A). The prefix GG denotes an ACV in the City of Greater Geraldton. Prefix CV denotes an ACV in the Shire of Chapman Valley.

Summary Recommendations for ACV with Good opportunities for Protection:

1. Review and implement existing management plans and conservation policies where they apply
2. Change zoning, vesting and reserve status to protection biodiversity values, where and when opportunities arise
3. Maximise the width of buffers and setbacks when re-zoning or planning for development
4. Strengthen regional and local linkages through protection, retention and revegetation
5. Design developments and apply conditions to development that achieve biodiversity conservation and management goals
6. Retain native vegetation in Public Open Space, streetscapes and transport corridors if development occurs
7. Direct recreational activities or facilities into cleared or severely degraded areas of Recreation reserves and fence and protect remnant vegetation
8. Develop and implement management plans for conservation areas
9. Continue or develop partnerships with community, private landholders and grant funders to implement conservation and regeneration

Areas of Conservation Value	Local Planning Scheme Zone / Reserve	GGSP 2011 Zone / Reserve	Min. area required to achieve LBS Goals	Recommendations	Important consideration
GG21	Parks & Recreation Rural Rural Residential	Regional park, Recreation and Conservation; Indicative foreshore protection area; Urban, Future urban, Rural living; Future rural living; Rural	112.90ha of BVA 371 18.7 ha of BVA 359 PC2, PC13	<ul style="list-style-type: none"> • Create Regional Park joining Chapman River Reserves, Foreshore Reserves, Cutubury Nature Reserve, • Review and implement priority recommendations from existing management plans, • Develop and implement Foreshore Management Plans with adjacent private landowners, • Investigate opportunities for tours and recreational use where complementary with conservation, • Manage with cooperation of local 'friends of' groups. • 	<ul style="list-style-type: none"> • Protecting Chapman River and its buffers as they are highly-valued, • Priority Regional Ecological Linkage, • Priority for grant funding in partnership with user groups, Conservation groups, landowners, Department of Water and NACC, • Multiple management plans, flora, fauna and foreshore surveys have already been drafted.
GG24	Parks & Recreation	Regional park, Recreation and Conservation	46.1ha of BVA359 PC13, PC10	<ul style="list-style-type: none"> • Formally vest the land as a reserve, for conservation (currently 'general farming'), • Revise zoning in next scheme to reflect conservation as primary use, • Work in partnership with local community groups with history of active role in management. 	<ul style="list-style-type: none"> • CGG land, known as 'Byne Park', • Representative of historically common vegetation type BVA 359. Limited opportunities exist for protection of this vegetation, • Includes two Plant Communities, PC10 & 13, • Local ecological linkage • Used as a 'nursery' for seed collection and revegetation. • Community member has produced a history and management plan.
GG38	Parks & Recreation Development Rural	Regional park, Recreation and Conservation Urban Rural	12.4ha of BVA371, 38.3ha of BVA431 PC1 & PC10	<ul style="list-style-type: none"> • Retain and protect the entire width of remnant vegetation. • Implement Foreshore Management Plans developed by landowners. • Review and implement priority recommendations of the Greenough River Estuary Management Plan. • Change vesting from Recreation to 	<ul style="list-style-type: none"> • Includes vegetation representative of BVA 371 – highest Conservation significance in the study area • Regional Ecological Linkage • Buffer to Greenough River • Multiple management plans, flora, fauna and foreshore

Areas of Conservation Value	Local Planning Scheme Zone / Reserve	GGSP 2011 Zone / Reserve	Min. area required to achieve LBS Goals	Recommendations	Important consideration
				Conservation. <ul style="list-style-type: none"> • Install new signage and manage access in line with local laws and management plans. • Manage with cooperation of local 'friends of' and coastcare groups. 	surveys already completed.
GG43	Parks & Recreation Landscape & Coastal Protection	Regional park, Recreation and Conservation Urban	26.5ha of BVA371, 25.1ha of BVA 440 14.6ha of BVA129 PC3 and PC8	<ul style="list-style-type: none"> • Implement recommendations of management plans including Pt Moore to Tarcoola Foreshore Management Plan, 2010 and draft Geraldton-Greenough Coastal Strategy, • Develop and implement weed and pest management program, • Investigate vesting for predominantly Conservation (R46860), • Manage with cooperation of local 'friends of' and coastcare groups. • 	<ul style="list-style-type: none"> • Vegetation representative of BVA 371 – highest Conservation significance in the study area, • Regional Ecological Linkage, • Coastal Vegetation, • Detailed vegetation surveys and management plans have been completed, • Several 'friends' Conservation groups operating in area.
CV23	Parks and Recreation, General Farming Northern portion in Oakajee Industrial Buffer Special Control Area (Parks and Recreation, Development, Rural and unchanged Oakajee Industrial Buffer Special Control alignment in proposed LPS No.2)	Regional parks, Recreation and Conservation, Indicative foreshore protection area; Future urban Rural Northern portion in Oakajee Buffer Area	25.7 ha of BVA 129, 18ha of BVA 359, 10ha of BVA 413, 44ha of BVA 440 PC2, PC3, PC5 (the only current know location), PC8 & PC10	<ul style="list-style-type: none"> • Subject to Environmental Review – any action to display regard for Minister of Environment decision 	<ul style="list-style-type: none"> • Includes diverse range of plant communities including riparian and estuarine vegetation and the only known location of PC5. • Forming regional linkages
GG17	Landscape and coastal protection Recreation Includes local reserves vested for Conservation & fauna protection (R28262 & R15207) Residential, Public	Regional park, Recreation and Conservation; Urban	177.4 ha of BVA359 PC2, PC13, PC14, PC10	<ul style="list-style-type: none"> • Change vesting of reserves with native vegetation from Recreation to Conservation (R21614 &R1858) • Create Regional Park joining Chapman River Reserves, Foreshore Reserves, Cutubury Nature Reserve. • Review and implement priority recommendations from existing 	<ul style="list-style-type: none"> • Includes Chapman River Reserve and Spalding Park Golf Course. • Includes vegetation representative of BVA 359, regionally significant. • Diverse range of Plant Communities including PC 2, 10, 13 and 14.

Areas of Conservation Value	Local Planning Scheme Zone / Reserve	GGSP 2011 Zone / Reserve	Min. area required to achieve LBS Goals	Recommendations	Important consideration
	Purposes			<ul style="list-style-type: none"> management plans, • Develop and implement Foreshore Management Plans with adjacent private landowners, • Investigate opportunities for tourism and recreational use where it complements management for Conservation, • Manage with cooperation of local 'friends of' and coastcare groups • Recreational activities should be focused within already cleared or highly degraded parts of the Reserved land. • Within the Waggrakine Guided Development Area north of Chapman River Reserve approximately 8 ha of PC13 remains. Consider opportunities to retain PC13 along proposed infrastructure corridors, such as road reserves. • 	<ul style="list-style-type: none"> • Only known location of PC14 in the study area. • Priority Regional and Local Ecological Linkage • Priority for grant funding in partnership with user groups, Conservation groups, landowners, Department of Water and NACC • Multiple management plans, flora, fauna and foreshore surveys already completed. •
GG39	Dune Preservation Parks & Recreation Rural	Regional park, Recreation and Conservation; Rural	101.7ha of BVA129, 228.70ha of BVA431 PC6, PC7, PC8, PC10, PC1	<ul style="list-style-type: none"> • If there is an opportunity through land swap or otherwise, aim to create a large Conservation park in this area, • Implement recommendations of Greenough Estuary Management Plan, • Implement recommendations from studies undertaken along Dongara to Cape Burney coast. • Additions to areas already reserved for Foreshore & River Systems protection could be considered as part of potential offset negotiations, • Change vesting of R24420 from Parklands to Conservation. 	<ul style="list-style-type: none"> • One of only 2 opportunities in the study area to create a large (> 100 ha) reserve in the study area, • Contains six Plant Communities, including the only location of PC 6, • Greenough River Estuary Management Plan must also guide actions, • Must also consider detailed vegetation surveys and recommendations produced from studies undertaken along the Dongara to Cape Burney coast.
GG37	Parks & Recreation	Regional park, Recreation and Conservation;	19.3ha of BVA371 PC1 & PC10	<ul style="list-style-type: none"> • Change vesting of the reserve from Recreation to Conservation 	<ul style="list-style-type: none"> • Representative of BVA 371, highest Conservation priority in

Areas of Conservation Value	Local Planning Scheme Zone / Reserve	GGSP 2011 Zone / Reserve	Min. area required to achieve LBS Goals	Recommendations	Important consideration
		primary distributor road		<ul style="list-style-type: none"> • 	<ul style="list-style-type: none"> • the study area
CV1	General Farming	Rural Future rural living	50.9ha of BVA675, 6.32ha of BVA35 PC15 & PC16	<ul style="list-style-type: none"> • Protecting natural areas through private land Conservation incentives, Conservation covenants 	<ul style="list-style-type: none"> • Adjoins the Oakajee Nature Reserves, DEC vested • Representative of vegetation within BVA 35 and BVA675, high Conservation priority • Representative of highly diverse plant community PC15 • Regional and local ecological linkage
CV7	General Farming	Future rural living	93.16ha of BVA35 PC16, PC15, Pc2	<ul style="list-style-type: none"> • Protecting natural areas through private land Conservation incentives, Conservation covenants • Change vesting of reserve R8810 from Government requirements to Conservation/Recreation. Recreational facilities should be limited to a network of walk trails and ancillary development e.g. interpretive signage and lookouts constructed so as to minimise impact and fragmentation. 	<ul style="list-style-type: none"> • Representative of BVA35, second highest Conservation priority vegetation type, surveyed portions in very good conditions • >100ha • Diverse, includes 4 Plant Communities PC2, 15, 16, 17 • Buffer to a network of creek lines • Intersection of regional and local ecological linkages to DEC vested Howathara Nature Reserve
CV25	Special Rural (proposed Residential 2.5 in the draft LPS No.2)	Future Urban	5.5ha of BVA359 PC13 & PC10	<ul style="list-style-type: none"> • Protecting natural areas through reserve allocation and building envelopes as part of the structure planning process required to be undertaken prior to subdivision • Encourage vegetation retention within Public Open Space and within larger blocks. • Protecting natural areas through private land Conservation incentives, Conservation covenants 	<ul style="list-style-type: none"> • Representative of historically common vegetation type BVA 359, that was over cleared and limited opportunities exist for protection of this vegetation type in the study area
CV27	General Farming Special Rural	Rural living	36.7ha of BVA413 PC15, PC2	<ul style="list-style-type: none"> • Protecting natural areas through private land Conservation incentives, 	<ul style="list-style-type: none"> • Representative of BVA413 of high Conservation significance

Areas of Conservation Value	Local Planning Scheme Zone / Reserve	GGSP 2011 Zone / Reserve	Min. area required to achieve LBS Goals	Recommendations	Important consideration
	(proposed Rural Smallholdings and Rural in LPS No.2)	Development Investigation Area		<p>Conservation covenants</p> <ul style="list-style-type: none"> Protecting natural areas through reserve allocation and building envelopes as part of the structure planning process required to be undertaken prior to rezoning and subdivision Encourage vegetation retention within Public Open Space and within larger blocks. 	<ul style="list-style-type: none"> Representative of highly diverse plant community PC15 Buffer to a network of creeklines Intersection of regional and local ecological linkages >40ha
CV17	General Farming Industry Oakajee Industrial Buffer Special Control Area	Rural Strategic Industry Oakajee Buffer Area Indicative Oakajee Port and Rail – rail alignment	20.4ha of BVA35 1.6ha of BVA359 PC12	<ul style="list-style-type: none"> Protecting natural areas through Oakajee Structure Plan where possible, and through requirements for offsets where loss of native vegetation is unavoidable. Area covered by an offset should be greater than area being offset. 	<ul style="list-style-type: none"> Representative of vegetation types of high Conservation priority BVA 35, BVA 413 and BVA 359. Regional and local ecological linkages
GG1	Rural-Residential	Rural living Rural	164.2ha of BVA359 23.8ha of BVA675 PC13, PC15	<ul style="list-style-type: none"> Implement the Waggrakine Rural-Residential Structure Plan (WRRSP) provisions. Consider changing vesting of reserve to Conservation (R25438) 	<ul style="list-style-type: none"> Includes over 20ha of BVA 675 that is considered to be equivalent to a Priority ecological community Representative of historically common vegetation type BVA 359, that was over cleared and limited opportunities exist for protection of this vegetation type in the study area Area is greater than 100ha, meaning it is of greater value than smaller areas, Detailed policy and recommendations outlined in Waggrakine Rural Residential Structure Plan should ensure net increase in condition and area of vegetation

GG2	Rural-Residential	Rural living, Regional park, Recreation and Conservation, Rural	7.4ha of BVA675 PC15	<ul style="list-style-type: none"> Implement the Waggrakine Rural-Residential Structure Plan (WRRSP) provisions, Consider changing vesting of R18757 from Recreation to Recreation/Conservation. 	<ul style="list-style-type: none"> Detailed policy and recommendations outlined in Waggrakine Rural Residential Structure Plan should ensure net increase in condition and area of vegetation
GG3	Rural-Residential	Rural living	21.9ha of BVA359, PC13	<ul style="list-style-type: none"> Implement the Waggrakine Rural-Residential Structure Plan (WRRSP) provisions, including: 	<ul style="list-style-type: none"> Detailed policy and recommendations outlined in Waggrakine Rural Residential Structure Plan should ensure net increase in condition and area of vegetation
GG4			3.62ha of BVA359 PC13		
GG5			15.8ha of BVA359 PC13		
GG22	Rural-Residential	Rural, Regional park, Recreation and Conservation	34.7ha of BVA359, 6.4ha of BVA371 PC13, PC10	<ul style="list-style-type: none"> Protect remaining natural areas through private land Conservation incentives, Conservation covenants etc. Investigate application of a zoning that prioritises conservation in the new scheme or amendments, Consider changing vesting of R9021 from Racecourse to Racecourse and Conservation and fence off Conservation areas 	
GG34	Rural	Rural living; Rural	46.4ha of BVA359 PC12 & PC10		
GG23	Rural	Rural	23.6ha of BVA371 PC10		
GG35	Rural	Rural	154.63ha of BVA359 PC12		
GG27	Rural	Future Urban, Future industrial, Urban	14.2ha of BVA359 PC13 & PC10	<ul style="list-style-type: none"> During any rezoning, review Conservation significance and reserve viable portions. 	<ul style="list-style-type: none"> GG36 includes the last remaining example of BVA 387 in the study area
GG36	Rural	Rural, Future urban, Primary distributor road	56.1ha of BVA359 2.1ha of BVA371, 1.57ha of BVA387 PC12 & PC10		
GG42	General Farming	Future urban	12ha of BVA371 and PC 9	<ul style="list-style-type: none"> Maximise vegetation retained through any future planning, including consideration as part of a regional park for conservation. Recreation and Conservation adjoining GG42. 	<ul style="list-style-type: none"> Representative of BVA 371 that is of highest priority for Conservation and this is the only location of newly mapped PC9. Regional ecological linkage

GG13	Parks & Recreation Special Use Residential	Regional park, Recreation and Conservation; Indicative Foreshore protection area; Public utility Wasterwater treatment plant buffer	13.6ha of BVA129, 2.10ha of BVA359, 43.4ha of BVA440 PC3,PC8, PC10	<ul style="list-style-type: none"> • In structure planning and re-zoning, maximise coastal setback width and reserve for high Conservation significance natural areas. • Investigate formal protection by changing the vesting of existing local reserve from Recreation to Conservation (R45523). • Retain further natural areas through structure planning of areas zoned residential. 	<ul style="list-style-type: none"> • Diverse range of vegetation types retained, including BVA 129, BVA 359 and BVA 440 and three Plant Communities; PC3, PC8 and PC10. • Priority Regional and Local Ecological Linkage • Coastal vegetation • Priority for further grant-funded projects in partnership with developer, user groups, Conservation groups and NACC
GG15	Parks & Recreation Residential (Sunset Beach)	Regional park, Recreation and Conservation; Indicative foreshore protection area	8.4ha of BVA129, 6.4ha of BVA440 PC3 &PC8	<ul style="list-style-type: none"> • Maximise Conservation reserves and costal setback width during structure planning, • Retain native vegetation in POS within urban areas 	<ul style="list-style-type: none"> • Coastal vegetation representative of BVA 129 and BVA 440, Plant Communities PC3 and PC10. • Actions to be guided by Sunset Beach Structure Plan and associated rehabilitation plans
GG41	Dune Preservation Parks & Recreation	Regional park, Recreation and Conservation; Future urban;	29.8ha of BVA129 PC3, PC8, PC10	<ul style="list-style-type: none"> • Reserve adequate portions of natural areas to maintain the ecological functions of the area, • If there is an opportunity, aim to create a large Conservation park in this area, • Develop and implement a management plan to protect conservation values. 	<ul style="list-style-type: none"> • Coastal vegetation representative of BVA 129 and Plant Communities PC3, PC8 and PC10. • Re-zoning currently being considered • Actions to be guided by recommendations from more detailed ecological site surveys already completed. • Curtin University currently undertaking work that assesses the role of Southgate Dunes in coastal processes
GG40	Parks & Recreation including buffer for WWT Special Use	Regional parks, Recreation and Conservation; Future Urban; Urban	7.21ha of BVA129, 18.8ha of BVA371, 23.8ha of BVA431 PC10, PC9	<ul style="list-style-type: none"> • During structure planning and rezoning, reserve adequate natural areas to maintain the ecological linkages and protect a representative area of regionally significant PCs • Within potential future urban areas retain native vegetation in POS 	<ul style="list-style-type: none"> • Representative of BVA 371, vegetation type of highest Conservation priority in the study area, as well as BVA 431 and BVA 129.

GG44	Recreation	Urban	5.48ha of BVA 371 and PC8	<ul style="list-style-type: none"> • Prioritise conservation of existing vegetation in the development and landscaping of the area, • Through development, created reserves with vesting that reflects conservation as a priority. 	<ul style="list-style-type: none"> • Representative of BVA 371 that is of highest priority for Conservation in the study area. • Regional ecological linkage • Proposal to alter zoning and vesting to residential is in process with Council
------	------------	-------	---------------------------	--	--

Table 2 - ACV with GOOD opportunities for RETENTION of natural areas.

These ACVs and their numbering correspond to the 'Retention' areas outlined in blue () on Figure 1-7 (Appendix A). The prefix GG denotes an ACV in the City of Greater Geraldton.

Prefix CV denotes an ACV in the Shire of Chapman Valley.

Summary Recommendations for areas with GOOD opportunities for RETENTION:

1. Maximise the width of buffer, setbacks and area of vegetation retained when re-zoning or planned for development
2. Design developments and apply conditions to development that achieve biodiversity conservation and management goals
3. Retain native vegetation in Public Open Space, streetscapes and transport corridors when development occurs
4. Develop support and incentive programs for private landholder conservation
5. Development management plans and apply conservation policies where possible
6. Strengthen regional and local linkages through protection, retention and revegetation

Areas of Conservation Value	Local Planning Scheme Zone / Reserve	GGSP 2011 Zone / Reserve	Min. area required to achieve LBS Goals	Recommendations	Important consideration
CV14	General Farming Oakajee Industrial Buffer Special Control Area	Rural Oakajee Buffer Area	4.2ha of BVA 35 and PC16	<ul style="list-style-type: none"> Protecting natural areas through Oakajee Structure Plan where possible, and through requirements for offsets where loss of native vegetation is unavoidable. Area covered by an offset should be greater than area being offset. 	<ul style="list-style-type: none"> Representative of BVA 35, high Conservation priority vegetation type in the study area. CV3 includes diverse plant community PC15, other communities represented are PC2, PC 13 and PC 16.
CV28	General Farming	Rural; Development Investigation Area	7.3 ha of BVA413 and 1.6ha of BVA675, PC15	<ul style="list-style-type: none"> Protecting natural areas through private land Conservation incentives, Conservation covenants Protecting natural areas through reserve allocation and building envelopes as part of the structure planning process required to be undertaken prior to rezoning and subdivision Encourage vegetation retention within Public Open Space and within larger blocks. 	<ul style="list-style-type: none"> Representative of BVA 35, high Conservation priority vegetation type in the study area. Includes BVA 413 bva 675. OCV17 and 32 include the diverse plant community PC15. Regional and local ecological linkages
CV15	General Farming	Rural	10.9ha of BVA35 and PC16	<ul style="list-style-type: none"> Retain all remaining vegetation, encourage management for Conservation through private landholder incentive programs such as Land for Wildlife or similar Prior to rezoning, consider reserving high Conservation value area or protecting their value through a rural Conservation zone. Encourage structure plan design that supports retention of native vegetation through Building Envelopes and Scheme Provisions. 	<ul style="list-style-type: none"> Representative of BVA 35, high Conservation priority vegetation type in the study area. Includes BVA 413 bva 675. OCV17 and 32 include the diverse plant community PC15. Regional and local ecological linkages
CV26	Special Rural	Rural living	7.3ha of BVA413, including PC12 and PC15		
CV6	General Farming	Future Rural Living	9.36 ha of BVA 35, including PC2 and PC16		

Areas of Conservation Value	Local Planning Scheme Zone / Reserve	GGSP 2011 Zone / Reserve	Min. area required to achieve LBS Goals	Recommendations	Important consideration
GG6	Rural Residential	Rural living Development investigation area	4 ha of BVA359, including PC13 and PC10	<ul style="list-style-type: none"> Implement the Waggrakine Rural-Residential Structure Plan (WRRSP) provisions. Consider changing vesting of R18757 from Recreation to Recreation/Conservation 	<ul style="list-style-type: none"> Critical to local and regional ecological linkages Representative of significant PC 13
GG7			4.4ha of BVA359 and PC13		
GG8			4.7ha of BVA359 and PC10		
GG19	Recreation	Regional park, Recreation and Conservation	11.58ha of BVA359 and PC10	<ul style="list-style-type: none"> Retain any remaining vegetation Develop and implement management plan Accommodate any future extension of active Recreational facilities within cleared and highly degraded parts of the reserve (R19625 and R23217) 	<ul style="list-style-type: none"> Representative of BVA 359 Local ecological linkage
GG20	Recreation	Regional park, Recreation & Conservation Development Investigation Area	16.8ha of BVA 359 and PC10	<ul style="list-style-type: none"> Change vesting of R24569 and R41503 from Recreation to Recreation/Conservation. Future extension of Recreational facilities or any other development should be limited to already cleared land or highly degraded land. 	<ul style="list-style-type: none"> Representative of BVA 359 Local ecological linkage
GG33	Rural	Future urban	16.10 ha of BVA 359 and PC 10 & PC11	<ul style="list-style-type: none"> Prior to rezoning consider reserving high Conservation value areas Within urban zoning, retaining native vegetation in POS 	<ul style="list-style-type: none"> Representative of BVA 359, Includes PC 11 for which limited opportunities for retention and protection exist in the study area Forms part of a Regional and Local Ecological Linkage

Table 3 - ACV with CONSTRAINED opportunities for PROTECTION or RETENTION of natural areas.

These ACVs and their numbering correspond to the 'Constrained' areas outlined in red () on Figure 1-7 (Appendix A). The prefix GG denotes an ACV in the City of Greater Geraldton. Prefix CV denotes an ACV in the Shire of Chapman Valley.

Summary Recommendations for areas with CONSTRAINED opportunities for PROTECTION or RETENTION:

1. Maximise the width of buffer, setbacks and area of vegetation retained when re-zoning or planned for development
2. Retain native vegetation in Public Open Space, streetscapes and transport corridors
3. Develop support and incentive programs for private landholder conservation

Areas of Conservation Value	Local Planning Scheme Zone / Reserve	GGSP 2011 Zone / Reserve	Min. area required to achieve LBS Goals	Recommendations	Important consideration
CV4	Recreation General Farming Oakajee Industrial Buffer Special Control Area	Rural Primary distributor road Indicative Oakajee Port and Rail - rail alignment Oakajee Buffer Area	20.4ha of BVA35, 1.6ha of BVA359 PC15, PC16, PC13 & PC2	<ul style="list-style-type: none"> Investigate vesting and zoning the portion of reserve unaffected by infrastructure alignments to Conservation (current vesting of R16200 is Recreation/Conservation) upon final identification of infrastructure alignments. Encourage protection of natural area adjoining the reserve through Conservation covenants or expansion of reserve in lieu of infrastructure alignment land requirements. 	<ul style="list-style-type: none"> Includes native vegetation representative of BVA 35 that is of high Conservation priority and also includes a diverse range of Plant Communities (PC2, 13, 15, 16). Regional and local ecological linkage
CV3	General Farming Oakajee Industrial Buffer Special Control Area	Rural Oakajee Buffer Area	14.88ha of BVA 35, PC2 & PC15	<ul style="list-style-type: none"> Protecting natural areas through Oakajee Structure Plan where possible, and through requirements for offsets where loss of native vegetation is unavoidable. Area covered by an offset should be greater than area being offset. 	<ul style="list-style-type: none"> Representative of BVA 35, high Conservation priority vegetation type in the study area. CV3 includes diverse plant community PC15, other communities represented are PC2, PC 13 and PC 16.
CV5	General Farming Industry Oakajee Industrial Buffer Special Control Area	Rural Strategic Industry Oakajee Buffer Area Indicative Oakajee Port and Rail – rail alignment	4.4 ha of BVA 35 and PC16	<ul style="list-style-type: none"> Protecting natural areas through Oakajee Structure Plan where possible, and through requirements for offsets where loss of native vegetation is unavoidable. Area covered by an offset should be greater than area being offset. 	<ul style="list-style-type: none"> Representative of vegetation types of high Conservation priority BVA 35, BVA 413 and BVA 359. Regional and local ecological linkages
CV9			5.9ha of BVA35, including PC2 & PC16		
CV8			14.85ha of BVA35 & PC16		
CV11			13.65ha of BVA35 , including PC2 and PC16		
CV16			12.4ha of BVA35, 33ha of BVA359, includes PC2, PC13 & PC16		
CV18			16.8 ha of BVA359 and PC13		

Areas of Conservation Value	Local Planning Scheme Zone / Reserve	GGSP 2011 Zone / Reserve	Min. area required to achieve LBS Goals	Recommendations	Important consideration
CV29	General Farming Oakajee Industrial Buffer Special Control Area	Rural; Indicative foreshore protection area; Primary distributor road Oakajee Buffer Area	11.8 ha of BVA413, including PC2 and PC10	<ul style="list-style-type: none"> Protecting natural areas through Oakajee Structure Plan where possible, and through requirements for offsets where loss of native vegetation is unavoidable. Area covered by an offset should be greater than area being offset. 	<ul style="list-style-type: none"> Representative of regionally significant BVA 413
CV21	Industrial Investigation (Oakajee Industrial Area B or Coastal in the proposed Local Planning scheme No 2)	Strategic industry	1.0 ha of BVA129 and 4.39ha of BVA440, including PC 4, PC 8 and PC10	<ul style="list-style-type: none"> Subject to Environmental Review – implement EPA recommendations Prior to fully developing the area, investigate and secure natural areas representative of PC4 outside the study area Consider industrial site design that could accommodate the retention and long term maintenance of the location of PC4 as part of a regional ecological linkage and coastal setback. 	<ul style="list-style-type: none"> CV 21 contains the only location of PC 4 in the study area and is representative of BVA 129 and BVA 440. CV22 is the only example of a sequence of plant communities ranging from communities of foredunes (PC3) through to secondary dunes (PC8) and including two types of communities on limestone ridges (PC11 and PC12) Oakajee River acts as an important link between the coast and the Conservation reserves to the East of the study area Maintenance of an appropriate buffer will ensure long term functioning of the river ecosystem Coastal vegetation Regional ecological linkage
CV20	Industrial investigation	Strategic industry	4.56ha of BVA359 and 5.75ha of BVA 440, including PC2, PC3, PC 8 and PC10		
CV22			43.98ha of BVA 129, 23.5ha of BVA 359, including PC3, PC 8, PC11 and PC 12		
CV24	General Farming (Development in the proposed LPS No.2)	Future Urban	4.85 ha of BVA 359 and PC12	<ul style="list-style-type: none"> Subject to Environmental Review – any action to display regard for Minister of Environment decision Protecting natural areas through reserve allocation and building envelopes as part of the structure planning process required to be 	<ul style="list-style-type: none"> Representative of BVA 359 and includes over 13 ha of PC12 for which limited opportunities exist across the study area for protection Regional ecological linkage

Areas of Conservation Value	Local Planning Scheme Zone / Reserve	GGSP 2011 Zone / Reserve	Min. area required to achieve LBS Goals	Recommendations	Important consideration
				<ul style="list-style-type: none"> undertaken prior to subdivision Retain native vegetation within POS and along transport corridors 	
CV32	Important Regional Road, General Farming	Important Regional Road, Rural	1ha of BVA413 and 2ha of BVA675 and PC15	<ul style="list-style-type: none"> Retain where possible any remaining vegetation along the transport corridor to form a buffer between the industrial development and the rural areas 	<ul style="list-style-type: none"> Representative of high Conservation value BVA 675 and plant community with highest diversity PC15 Regional ecological linkage
GG10	Residential	Urban	2ha of BVA 359, and PC13	<ul style="list-style-type: none"> Implement the Glenfield Structure Plan provisions to protect and retain native vegetation. 	<ul style="list-style-type: none"> Representative of vegetation types historically common in the region, but now reduced regionally and locally to less than 30% of the pre-European extent. Forming stepping stones within regional and local ecological linkages
GG11			10ha of BVA 359, and PC 13		
GG12			5.49ha of BVA 359, and PC13		
GG14	Residential (Glenfield Beach) Parks & Recreation	Urban Public Utility	41.61ha of BVA440 and 2.92ha of BVA359 and PC2 and PC8	<ul style="list-style-type: none"> Maximise costal setbacks and foreshore reserve width. Retain native vegetation within POS and buffers between the wastewater treatment plant and future residential development 	<ul style="list-style-type: none"> Includes a diverse range of vegetation, including BVA 129, BVA 359 and BVA 440 and plant community PC2 (riparian vegetation), PC8 and PC10 Regional Ecological Linkage
GG18	General Industry, Industry – light, Residential development Public Purposes Road	Industrial and service commercial Public Utility	2.3 ha of BVA 359 and PC10	<ul style="list-style-type: none"> Retain native vegetation within streetscapes and transport corridor landscaping Maintain buffers to adjoining Rural residential developments to the east 	<ul style="list-style-type: none"> Representative of BVA 359, includes riparian vegetation (PC2)
GG9	Residential Parks & Recreation	Urban Indicative rapid transport alignment	1.9ha of BVA359 and PC2	<ul style="list-style-type: none"> Retain native vegetation along the transport corridor and within adjoining urban areas as POS 	<ul style="list-style-type: none"> Representative of BVA 359 and includes riparian vegetation – PC2 Regional ecological linkage
GG25	Industrial	Future industrial and service	1.5ha of BVA359 and PC13	<ul style="list-style-type: none"> Retain native vegetation within streetscapes and transport corridor 	<ul style="list-style-type: none"> Representative of highest conservation priority BVA 371

Areas of Conservation Value	Local Planning Scheme Zone / Reserve	GGSP 2011 Zone / Reserve	Min. area required to achieve LBS Goals	Recommendations	Important consideration
		commercial Development investigation area		landscaping	and BVA 359, PC 10 and PC13 <ul style="list-style-type: none"> Local ecological linkage
GG26	Residential	Industrial and service commercial	0.6ha of BVA359 and 0.4 ha of BVA371 to create a 1 ha remnant (including PC10)	<ul style="list-style-type: none"> Retain native vegetation within streetscapes and transport corridor landscaping 	<ul style="list-style-type: none"> Representative of regionally significant BVA 387 and BVA 359 Local ecological linkage
GG28	Rural Residential	Urban	1.76ha of BVA359 and PC13	<ul style="list-style-type: none"> Prior rezoning, investigate opportunities to reserve a viable representation of native vegetation and retain native vegetation within POS and streetscapes where feasible 	<ul style="list-style-type: none"> Representative of BVA 359 and includes PC13 Local ecological linkage
GG16	Residential (Waggrakine Guided Development Plan)	Urban	1 ha of BVA359 and pc10	<ul style="list-style-type: none"> Retain native vegetation within POS, streetscapes and transport corridor landscaping 	<ul style="list-style-type: none"> Representative of BVA 359 Local ecological linkage
GG29	Residential, Parks & Recreation School	Urban	1ha of BVA359 and PC12	<ul style="list-style-type: none"> Retain native vegetation within POS, streetscapes and transport corridor landscaping 	<ul style="list-style-type: none"> Representative of BVA 359
GG30	Residential	Urban Future urban Future industrial	4.30ha of BVA359 and PC10	<ul style="list-style-type: none"> Retain native vegetation within POS, streetscapes and transport corridor landscaping 	<ul style="list-style-type: none"> Representative of BVA 359 and a diversity of Plant Communities including PC2, PC8, PC10, PC11, PC12 and PC13 Local ecological linkage
GG31			5.4ha of BVA 359 and PC13 & PC8		
GG32			2ha of BVA359 and PC12		