

Contractor Site Induction for Meru Waste Disposal Facility

61 Landfill Lane, Narngulu

Open 7:30am – 4:30pm Monday to Sunday



Site Operating Hours & Contacts

Operating hours:

Monday to Sunday

7.30am to 4.30pm (open to the public), 7.00am to 4:45pm (operators on site)

Main Site Contacts:

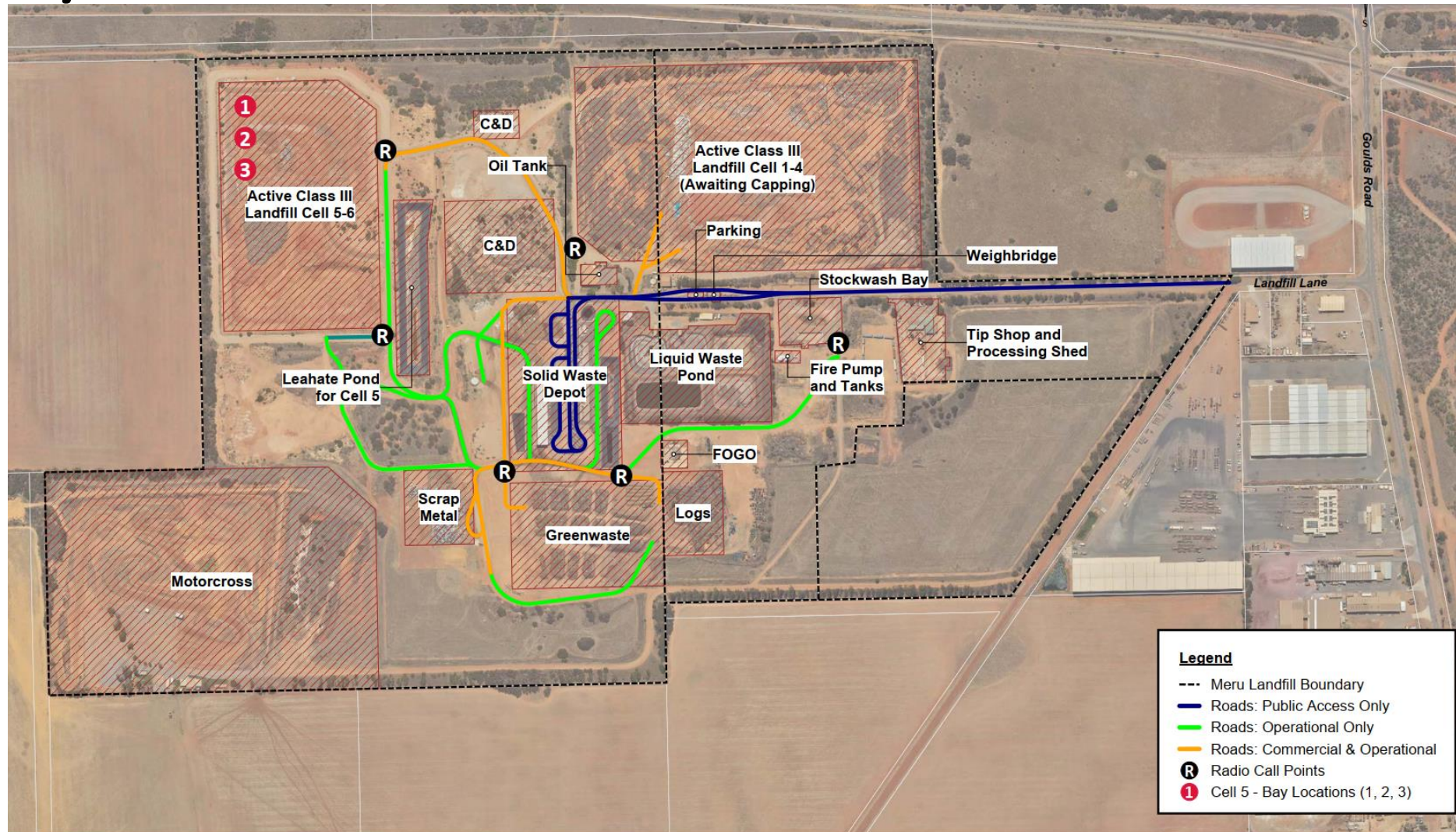
Details will be provided upon completion of site induction.

NOTE: Any work conducted before/after the operating hours will require prior approval. Please reach out to the main site contacts.

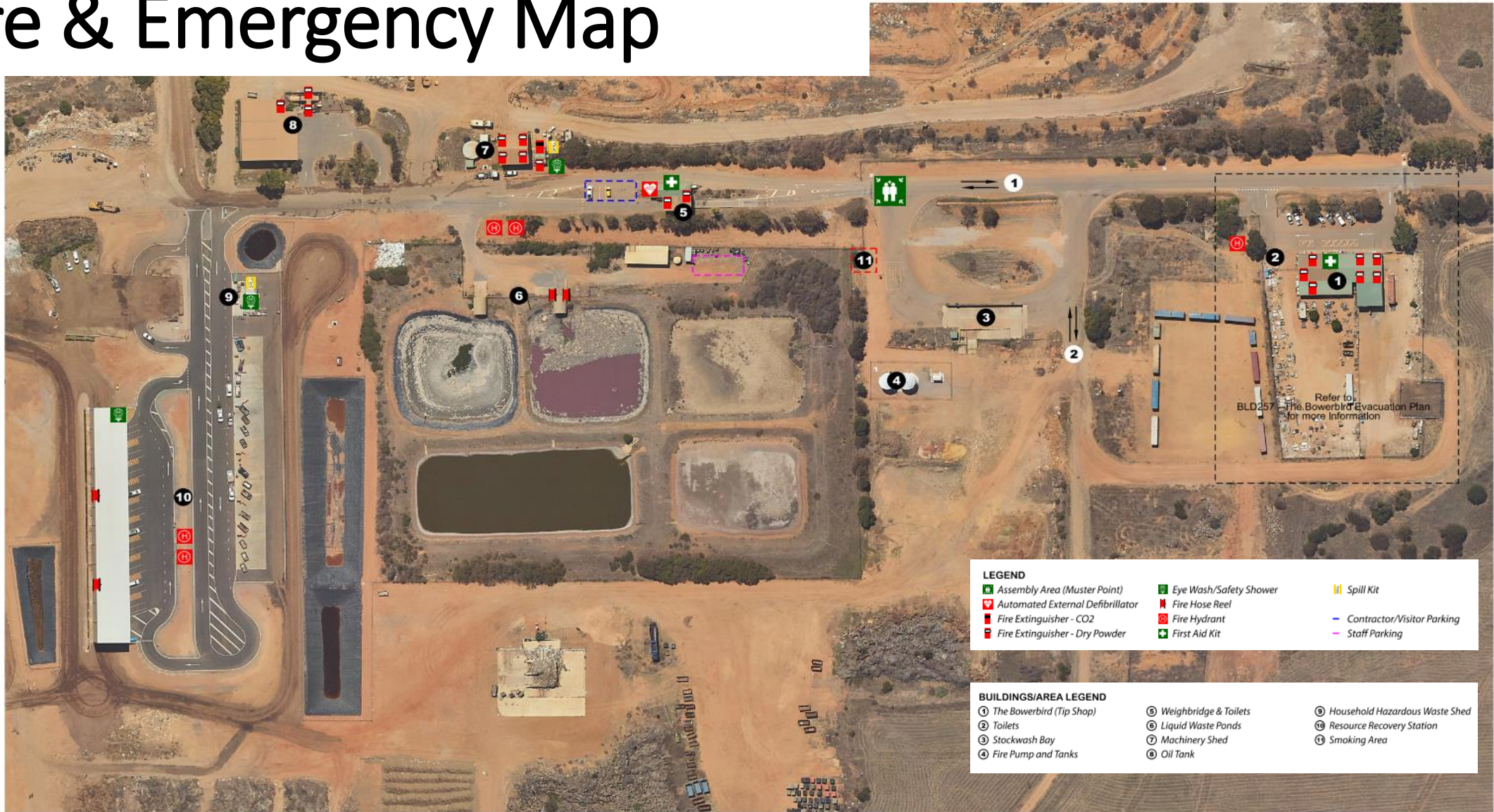
Site Main Details

- All contractors and visitors **MUST** report to the weighbridge upon entry and exit
- Basic PPE requirements are:
 - Long pants and long sleeve shirt
 - Hi-vis
 - Bump cap or suitable alternative
 - Handheld radio – Operating **CHANNEL 16**
 - Steel Caps boots
- Speed limit of 10km/hr
- Be aware of interaction with heavy vehicles (Loader, compactor...)
- Report all incidents such as near misses, damages, injuries and accidents immediately
- Smoking is prohibited on site
- Zero tolerance for drugs and alcohol

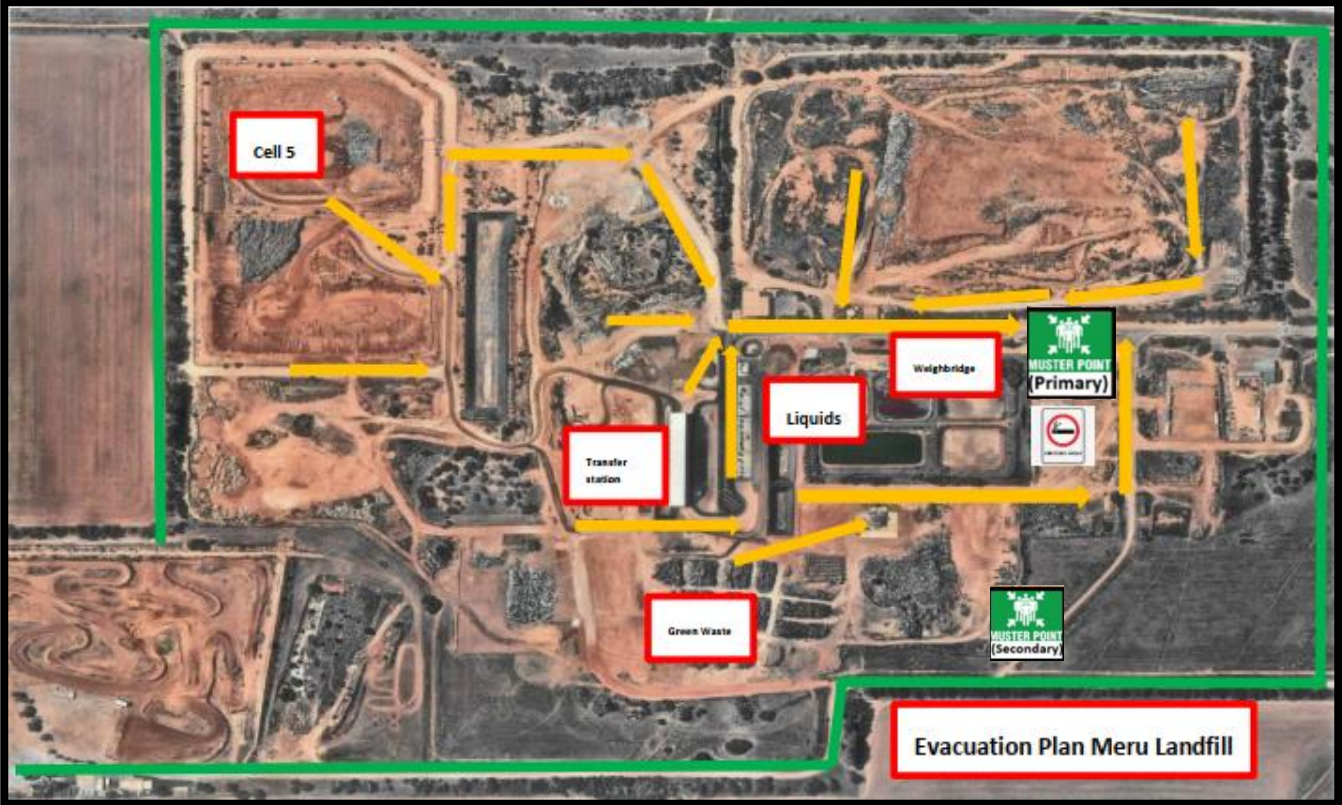
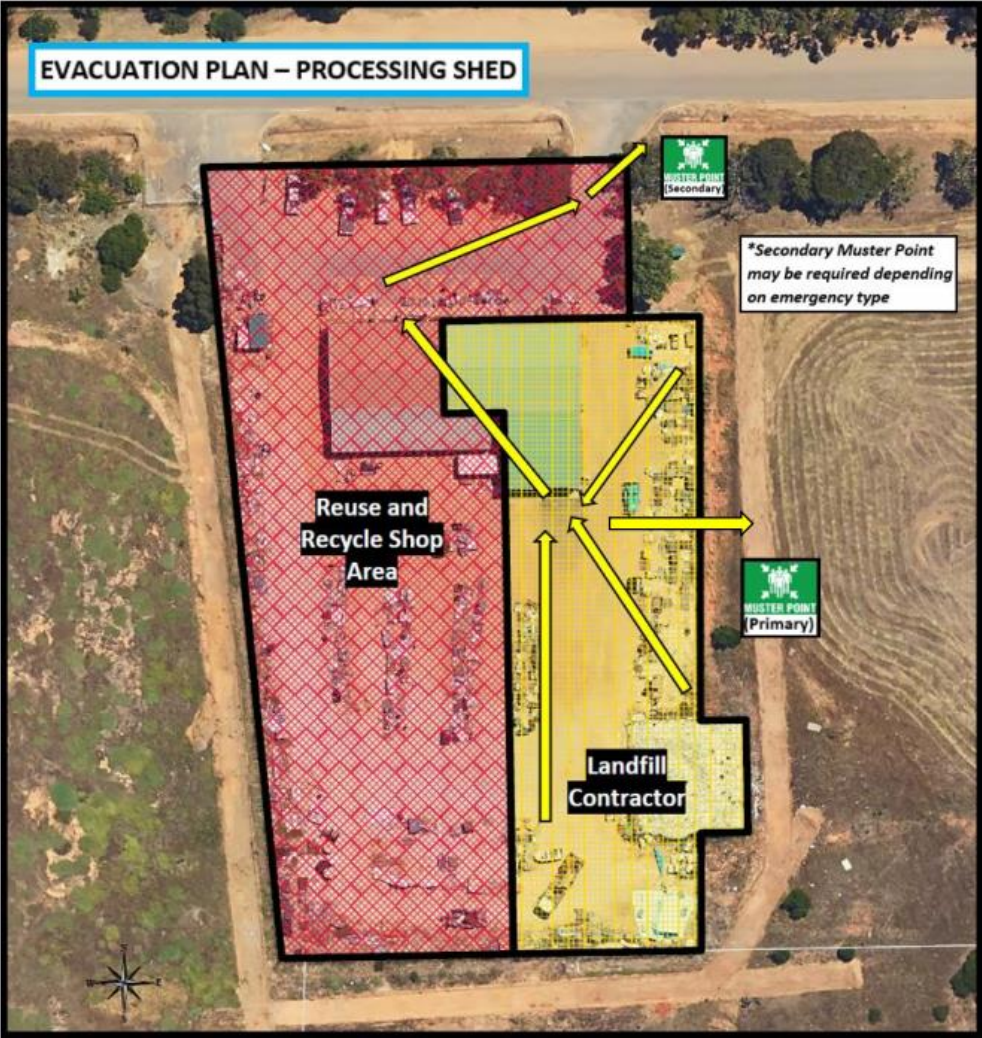
Site Layout



Fire & Emergency Map



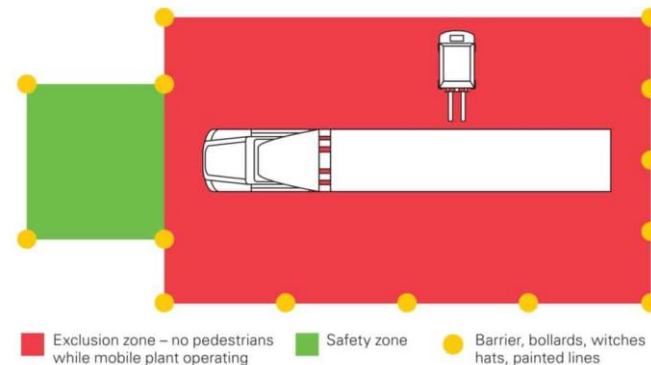
Site Muster Point



Site Major Risks

1. Interactions with mobile plant (light and heavy machinery)

- Maintain an exclusion zone from any operating plant or heavy machinery
- Communication via UHF Channel 16




2. Interactions with the general public (including pedestrians and vehicles)

3. High-Risk jobs will require a permit from the City or Cleanaway











Any job specific risk must be outlined in any safety documentation.

Site Guidelines



Meru Waste Management Facility

SITE GUIDELINES

 Follow all signage and directions given by authorised personnel	 Be prepared to have load visually inspected at the weighbridge
 Enclosed footwear recommended	 Lighting of fires prohibited
 Follow 10km/h and all traffic rules indicated by signage	 Children and pets should remain inside vehicles
 All vehicles must give way to site machinery	 Smoking, vaping or consumption of alcohol is prohibited onsite
 Individuals enter the site at their own risk	 No scavenging

- Fees may apply. Please check fees and charges on the City website or phone 9956 6600 for details.
- Mixed loads will be charged at the highest applicable rate for load contents.

Visit www.cgg.wa.gov.au for further information

Site Guidelines listed above, must be adhered to at all times.

Site Entry – Next Steps

1. Complete Site Induction Questionnaire

- This can be completed here: [CEW04 - Meru Site Induction Questionnaire](#)

2. Complete Notification of Entry Form

- This can be completed here: [CEW05 – Meru Site Entry Application](#)