

## Queens Park Theatre

### TECHNICAL SPECIFICATIONS



### CONTACT DETAILS

---

#### QUEENS PARK THEATRE

Phone Number: (08) 9956 6662  
Address: 75 Cathedral Avenue, Geraldton WA 6530  
Postal Address: PO Box 101, Geraldton WA 6531  
Email Address: [qpt@cgg.wa.gov.au](mailto:qpt@cgg.wa.gov.au)  
Website: [www.queensparktheatre.com.au](http://www.queensparktheatre.com.au)

## STAGE

### Brief Stage Description

We have an unranked proscenium arch stage with 39 single-purchase fly-line facilities.

### Stage Dimensions

#### Proscenium

Height:	6m
Width:	9.7m

#### Distance From

Proscenium to Cyclorama:	10.7m depth
Standard Performance masking:	9.5m width
Transverse masking to transverse masking:	17.2m (maximum useable width)
Setting line to front edge of stage:	1.15m (in front of House Curtain)
Stage Extension is a curved edge adding:	2.6m (from front edge – 3.7m)
Drift:	18m

#### Overhead Obstructions

Up stage cross over has air-conditioning ducting.

### Auditorium

Auditorium consists of ranked auditorium seating and a circle level with box seats.

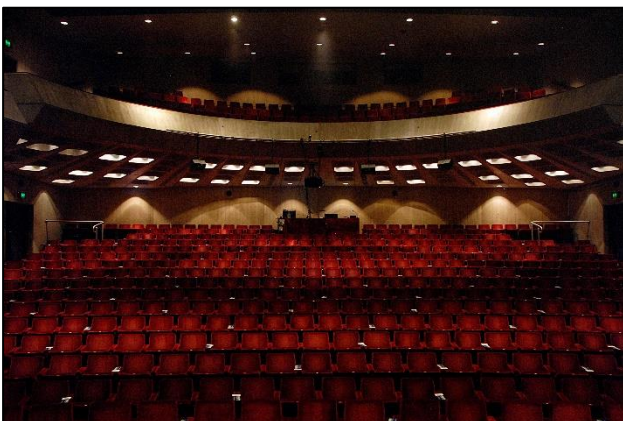
#### Seating Capacity

Lower Auditorium:	505
Balcony Seating	151
<b>Full Seating Capacity:</b>	<b>656</b>

#### Seating Capacity with Stage Extension

Lower Auditorium:	457
Balcony Seating:	151
<b>Full Seating Capacity:</b>	<b>608</b>

Auditorium Seats: Row A, B & BB – 48 Seats are removed



### Stage Extension/Orchestra Pit

Auditorium Seats (Rows A, B and BB) can be removed to create a stage extension or orchestra pit. The default seating is at Auditorium level, without the stage extension. Please advise the Technical Team Leader during the preliminary discussions, if this needs to be different to the default position.

SWL of Orchestra Lift

2T

Dimensions of the Orchestra Pit

2.6m x 8.0m



With Stage extension



Without Stage extension

### Fly-line Facilities

The Fly System is a single purchase counterweight flying system, which is only operated by inducted QPT Technical Staff or the discretion of the Technical Team Leader.

#### Fly System Details

Operating Position:

OP at stage level

Total Number of lines:

39 lines

Batten Type:

50mm O/D pipe

Batten Length:

1647cm

Batten Pick-ups:

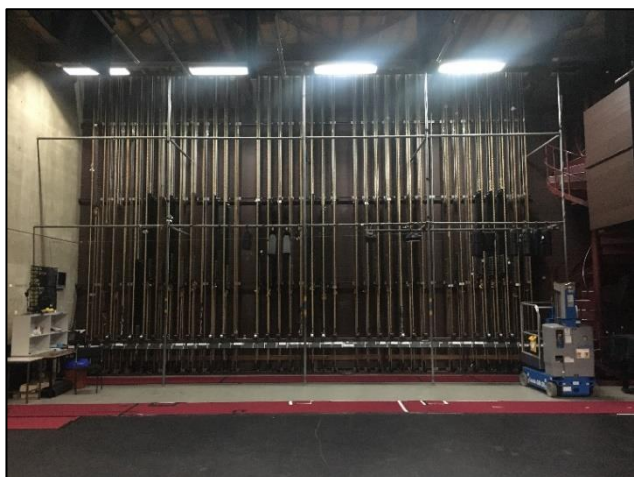
(4) pick-ups 2 each side of the 2m centre mark

Batten W.L.L:

Even distribution load of 350kg

Cradle Capacity:

375kg



## Hanging Plot

SL: Setting Line as indicated previously

Line Type: **SP** = Single purchase, **DP** = Double Purchase, **MW** = Motor Winch, **HW** = Hand Winch, **HL** = Hand-line

W.L.L: Maximum distributed load including bar weight

Line #	Distance from SL	Line Type	W.L.L	Venue Allocation	Intended Use (Hiring Company Use)
				Setting Line	
1	25cm	MW		RAG/House Curtain	Operates from SM Desk
2	50cm	SP	350kg	Teaser + Legs	Fixed
3	75cm	SP	350kg	Screen	Fixed
4	100cm	SP	350kg		
5	125cm	SP	350kg	LX1	Lighting 24 inputs 10 amp 18 Dimmer Channels
6	150cm	SP	350kg		
7	175cm	SP	350kg		
8	200cm	SP	350kg	Projector	
9	225cm	SP	350kg		
10	250cm	SP	350kg	Border	
11	275cm	SP	350kg	Legs	
12	300cm	SP	350kg	LX2	Lighting 24 inputs 10 amp 18 Dimmer Channels
13	325cm	SP	350kg		
14	350cm	SP	350kg		
15	375cm	SP	350kg		
16	-	-	-	No Line	-
17	425cm	SP	350kg		
18	450cm	SP	350kg		
19	475cm	SP	350kg	Border	
20	500cm	SP	350kg	Legs	
21	525cm	SP	350kg	LX3	Lighting 24 inputs 10 amp 18 Dimmer Channels
22	550cm	SP	350kg		
23	575cm	SP	350kg	Border	
24	600cm	SP	350kg	Portable Screen	
25	625cm	MW		Mid-Stage Smother	Operates from SM desk
26	650cm	SP	350kg		
27	675cm	SP	350kg		
28	700cm	SP	350kg	Border	
29	725cm	SP	350kg	Legs	
30	750cm	SP	350kg	LX4	Lighting 24 inputs 10 amp 18 Dimmer Channels
31	775cm	SP	350kg		
32	800cm	SP	350kg		
33	-	-	-	No Line	-
34	-	-	-	No Line	-
35	875cm	SP	350kg		
36	900cm	SP	350kg		
37	925cm	SP	350kg	Border	
38	950cm	SP	350kg	Legs	
39	375cm	SP	350kg		
40	1000cm	SP	350kg	LX5	LED Fusion Bars
41	1025cm	SP	350kg	Smother	
42	1050cm	SP	350kg	Cyclorama	Fixed

## Drapery

Type	Material	Colour	Width	Height	Quantity
House Curtain	Red Velvet/50% Gathered	Red	1547cm	700cm	1
Borders	Wool	Black			5
Legs	Fire Retardant Wool	Black			7 pairs
Tabs/Smother	Fire Retardant Wool	Black			6
Cyclorama	Cotton	White	1550cm	700cm	1
Scrim					

## Access Equipment

### Elevated Work Platform

- Genie GR20

[www.genielift.com/en/aerial-lift/vertical-mast-lifts](http://www.genielift.com/en/aerial-lift/vertical-mast-lifts)

Working Height: 8.02m/Platform Height: 6.02m

### Ladders

- 1x Foldable Multi-purpose A-Frame 4.5m
- 1x A-Frame 2.4m
- 1x Step Ladder
- 1x A-Frame 1.8m
- 1x Extension Ladder 6.5m

## Staging Risers

- 16 x 1.8 x 1.2m Global Performer staging risers
- 4 x 1.8 x 600mm Global Performer staging risers
- Heights available @ 300mm, 600mm and 900mm, including wheels at various heights

## Rigging

The QPT has a limited stock of soft slings, shackles, ropes and rigging equipment.

- 2x 1T Chain Blocks

Please discuss your Rigging requirements with the Technical Team Leader prior.

## LIGHTING

See hanging plot for standard LX bar locations

### Control

- MA Dot 2 XLF + additional Fader Wing [www.malighting.com/dot2/](http://www.malighting.com/dot2/)
  - Signal distribution: Cat5 From Ops to PS Working Gallery Level Into a 8 Port Artnet Node (Main)
- Two universes of DMX @ FOH (Backup)

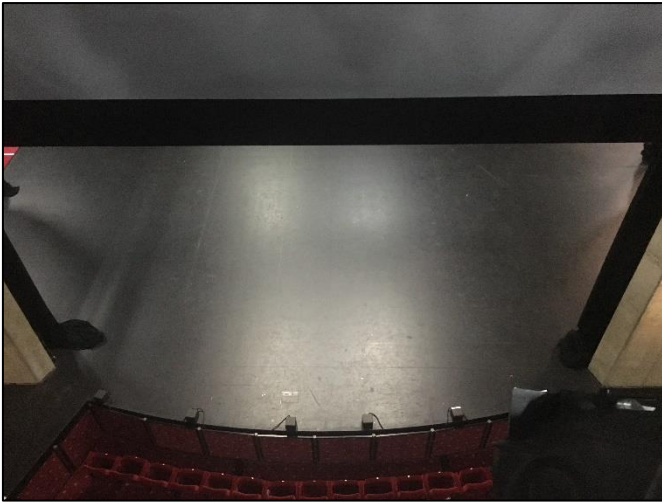
### Dimmer Racks

<u>Total Dimmers</u>	138
Dimmer Locations:	PS Gallery
6x 2.4Kw Jands HP-6:	96 channels
7x 5Kw Jands HP – 6	42 channels
3x Power Distro Jands PDS	36 outlets

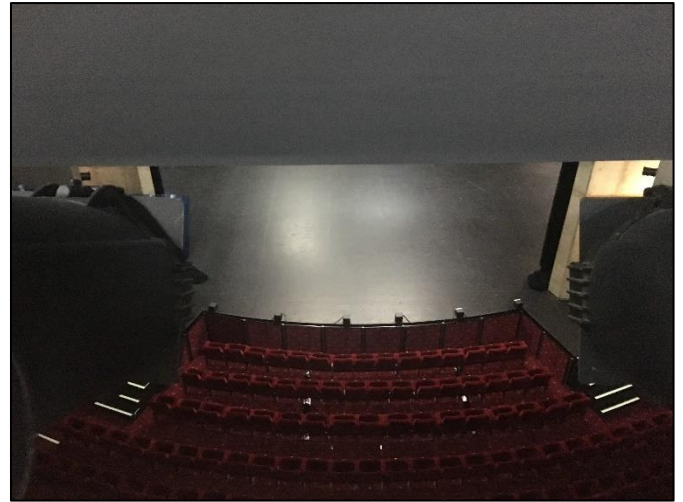
### House Lights

Independent control from SM desk @ Prompt Side – Fade time not adjustable (8 secs).

<u>Positions</u>	
Stage LX Bars	4x LX Bars in a Standard House Rig position (looms can be made up for other battons)
<b>FOH Bridge #1</b>	
Setting Line to Lighting Bar:	11m @ 65 degrees
Useable Bar width:	12m
Notes:	See photo on next page for obstructed view
<b>FOH Bridge #2</b>	
Setting Line to Lighting Bar:	15.7m @ 45 degrees
Useable Bar width:	12m
Notes:	See photo on next page for obstructed view
<b>Balcony Bar</b>	
Setting Line to Lighting Bar:	14m @ 20 degrees
Useable Bar width:	6m
Notes:	Limited Patch Points for fixtures, difficult access
<b>FOH Perches (PS and OP)</b>	
Setting Line to FOH Perch:	9.5m @ 40 degrees
<b>FOH Pros Booms (PS and OP)</b>	
Setting Line to FOH Boom:	2 – 5m @ 5 - 70 degrees

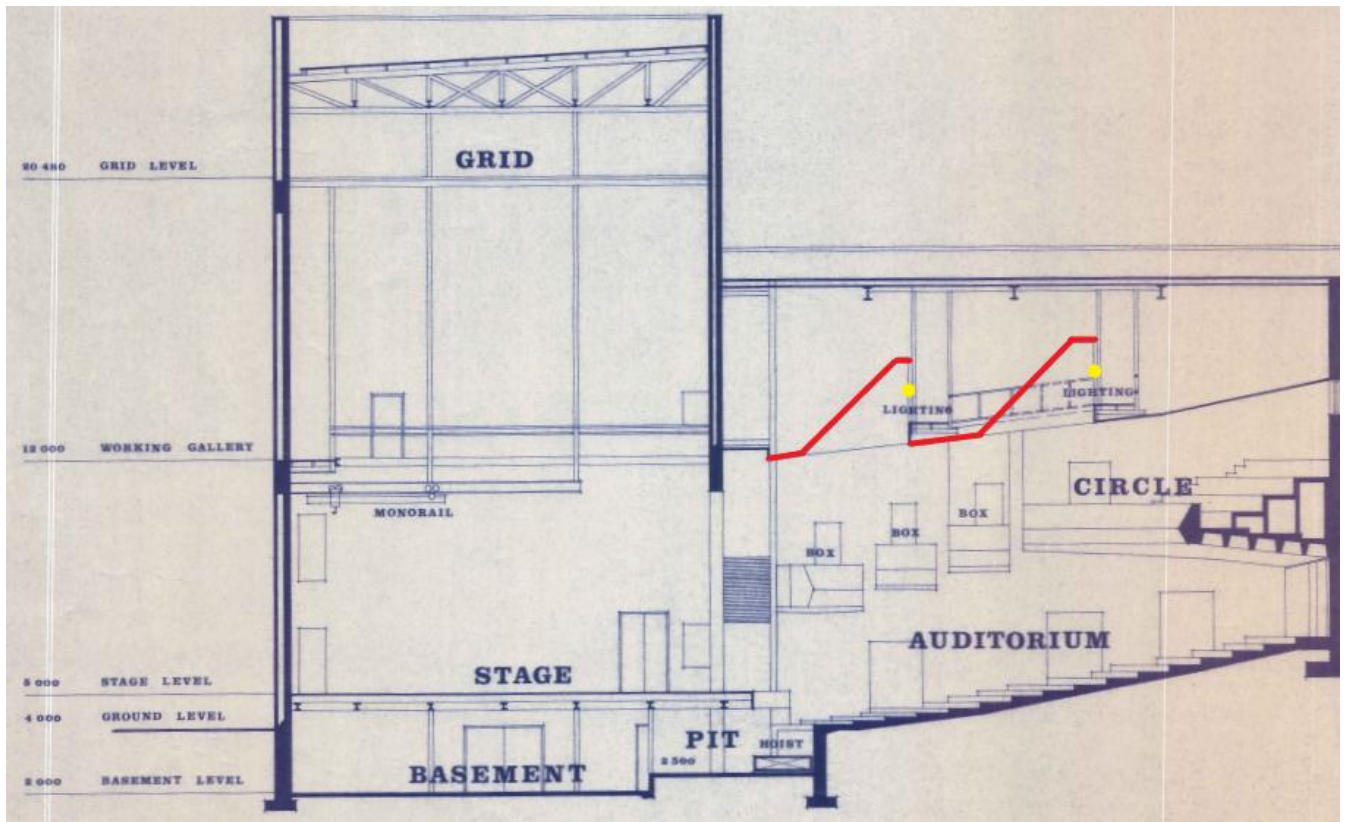


FOH Bridge 1

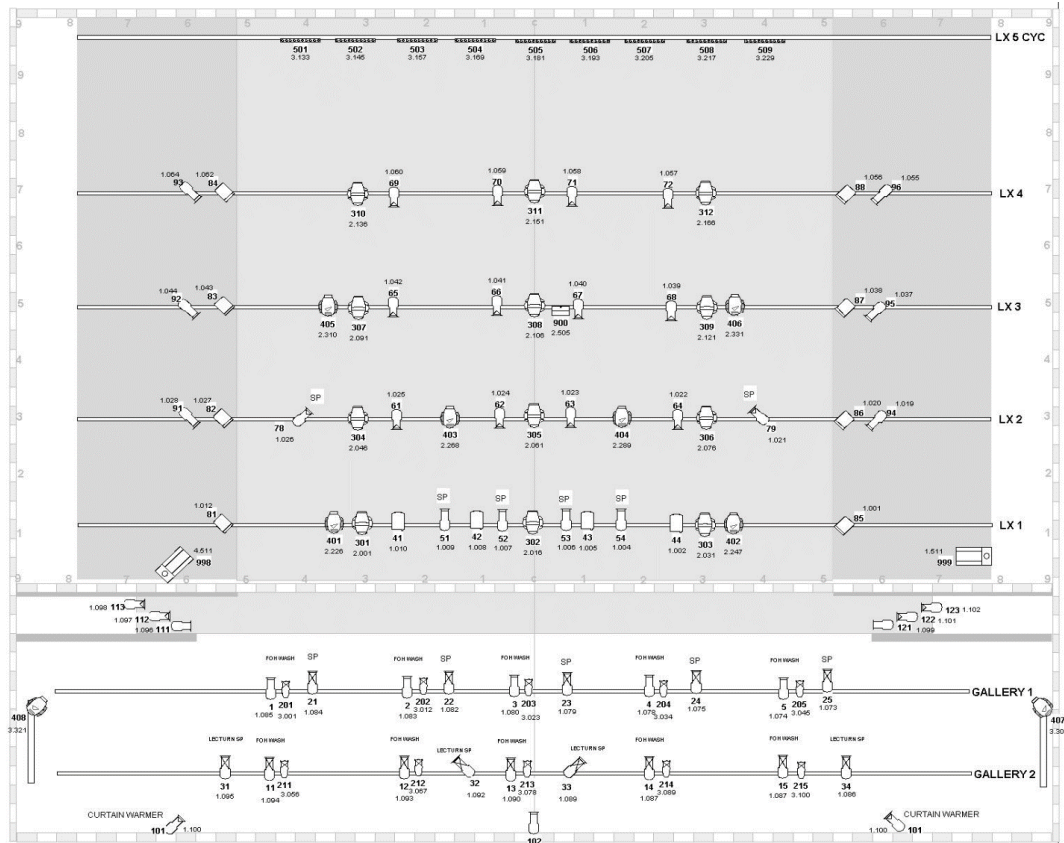


FOH Bridge 2

Lighting shots from both FOH bridges can be obstructed by the ceiling.



## Sample Standard Lighting Plan



View from Audio and Lighting position.



## Stage Luminaire

### Profiles

Make	Model	Angle	Detail/Accessories	Total
Selecon	Pacific	12-28	Gobo M	12
Selecon	Pacific	23-50	Gobo A	20
Selecon	Pacific	45-75	Gobo A	20
Selecon	Pacific	90	Gobo A (Lens Only)	2
Light Sky	LED Profile (11ch Mode)	Fixed 19	<a href="https://en.lightsky.com.cn/product/8800-c42/">https://en.lightsky.com.cn/product/8800-c42/</a>	12

### Fresnel's

Make	Model	Detail/Accessories	Total
Selecon	Fresnel 8 inch	Barn doors	8
Strand	Harmony F	4 x with barndoors / 4 x without barndoors	8

### Cyc Wash

Make	Model	Detail/Accessories	Chan	Total
Ehrgeiz	Fusion Bar 2	<a href="https://ehrgeiz.glp.de/en/products/linear-lights/fusion-2">https://ehrgeiz.glp.de/en/products/linear-lights/fusion-2</a>	13	8

### Overhead Movers

Make	Model	Chan	Detail/Accessories	Total
Martin	MH 7 Hybrid	21	<a href="https://www.martin.com/en/products/rush-mh-7-hybrid">https://www.martin.com/en/products/rush-mh-7-hybrid</a>	8*
Light Sky	Tour Pro Wash 300	15	<a href="https://www.showtools.com.au/product/tourpro-led-300-wash/">https://www.showtools.com.au/product/tourpro-led-300-wash/</a>	15
Clay Paky	Alpha Spot 300	21	<a href="https://www.claypaky.it/en/products/alpha-spot-300">https://www.claypaky.it/en/products/alpha-spot-300</a> (Old units / output is limited)	3

\*2 of the MH7 are permanently mounted on Boom above Box Seats

## Follow Spots

Make	Model	Angle	Detail/Accessories	Total
Robert Juliet	Alex	7-14	6 Colour Holder	2

## Accessories

Item	Make	Model	Detail/Accessories	Total
Hazer	Unique	2.1	DMX	2
Mirror Ball			20in diameter ball with motor	1
Iris	Selecon		For Pacific's	8
Storm 1000 RGB Strobe	TourPro		DMX	1

## Power

3 Phase Outlets (There is no 3 phase power on OP side)

- 35 amp PS at stage level
- 40 amp PS at stage level
- 40 amp PS Gallery

## Cabling

### 240v Extension Cable

The QPT has minimal stock of tagged 10 amp extension leads to accommodate the venue's standard lighting rig. Any additional equipment will require additional cable stock to be sourced.

### DMX 5pin / 3pin

The QPT has minimal stock of tagged DMX leads to accommodate the venue's standard lighting rig. Any additional equipment will require additional cable stock to be sourced.

## AUDIO

---

### Control

- Midas Pro 2C <https://www.musictribe.com/Categories/Midas/Mixers/Digital/PRO2C-CC-TP/p/P0BNK#>
- Yamaha LS9-32 Digital Console <http://www.yamahaproaudio.com/global/en/products/mixers/ls9/>

### Control Positions

Located at center position at the back of the lower auditorium, next to Lighting operations.

### Amplifiers

- 5x L'Acoustics
- 3x Quest QA3004
- 1x Quest QA4004
- 1x Peavey CG 3000

### Speakers

#### FOH Speakers (Fixed installation)

- 7x KIVA Elements + 1 x SB15m – per side (Flown)
- 2x 8XT Side Fill
- 6x 5XT Lip-fill
- 4x 8XTi Under balcony fill
- 2x SB18i Subs ground stacked (1 per side)

<https://www.l-acoustics.com/en/products/loudspeaker-systems/k-series-variable-curvature-line-source/>

### Fold-back

- 2x QM 700 <http://www.questaudio.com.au/qmotion/qm700/>
- 3x QM 12MPL <http://www.questaudio.com.au/qmotion/qm12mp/>
- 3x QM 12MPR
- 2x EV SX300 <https://www.electrovoice.com/product.php?id=202>

Please discuss your fold-back requirements with the Technical Team Leader, if you are requiring more than just playback speakers onstage.

**Microphone and RF**

Make	Model	Detail/Accessories	Use	Total
Sennheiser	G4 Wireless Microphone	e935 Caps		4
Sennheiser	G3 Wireless Microphone	e934 Caps		4
Sennheiser	Hs2 Headset Mic			2
Sennheiser	ME2II	Lavalier Mic		1
Audac	CMX726	Headset Mic		6
Shure	Beta 52a	Kick Mic	Kick Mic	1
Shure	SM58	Clips	Instrument/Vox	5
Shure	SM57	Clips	Instrument/Vox	4
AKG	D5	Vocal Mic	Vocals	1
AKG	C418	Clip-On	Toms	3
AKG	D112	Kick Mic	Toms	1
Shure	SM81		Overheads	2
EV	RE90H	25 foot Dropper Cable off Fly bar	Choir	1
EV	RE90B	Boundary Mic	Tap Mics	2
Sennheiser	E835		Vocals	3
EV	ND66	Adjustable Head	Instrument	4
Generic TTS and Talkback				2

**Associated RF Equipment**

Make	Model	Detail/Accessories	Total
Sennheiser	G3 B Band Receiver		4
Sennheiser	G4 GWB Band Receiver	Total of 8 channels of RF – this can be a combination of hand-held, lavalier or head-set microphones. Please inform Technical Team Leader of combination required before performance.	4
Sennheiser	SK500 Body-pack Transmitter		8
Sennheiser	A 1031-U Passive Antennas	Associated 10 metres 50Ohm coax cable with BNC connectors for both Antennas.	2
Shure	2 Channel Receiver unit BLX88		1
Shure	Wireless Hand-held PG58		1
Shure	Wireless Body-pack Transmitters	4 pin connection	2
MacBook		All Sennheiser wireless gear is networked and managed on a MacBook using Sennheiser wireless systems manager.	

**DI's**

Make	Model	Detail/Accessories	Use	Total
Radial	JDI	Passive		4
Radial	Pro D2 Stereo DI	Passive	Show Playback	1
Klark Technik	DN100	Active		2
Behringer	Ultra DI	Active		3
Radial	USB Playback	Passive	Laptop Output	1
Radial	Bluetooth DI			1
Radial	Presenter DI			1
Jands	SM2 Direct Box			1

## Stands

Item	Model	Detail/Accessories	Total
Tall Black Boom	K&M		14
Tall Grey Boom	K&M		4
Straight Mic Stand	K&M	Round Base	4
Short Grey Boom	K&M		3
Short Black Boom	K&M		2
Medium Black Boom	K&M		1
Table Top Stand	Generic		2

## Playback

Item	Make	Model	Detail/Accessories	Total
QLab			Installed on 2018 MacBook 15.4 inch 2.8GHZ processor with SSD, variety	

## Cabling

### Audio Cable

QPT has a stock of XLR cable to accommodate the venue's equipment.

### Multicore

2x 15m stage box – 8 channels, 4 sends  
 1x 20m stage box – 16 channels

### Lines to and from Stage

- 3x Cat6 Lines terminated with Ethercon barrels at each end (these are dedicated lines for our in-house audio desk, but can be used for touring Audio desks).
- 32 channels of copper Inputs/8 returns from amp room side of stage that connect to FOH control position.

## Audio Notes

Please give notice if you require our Audio Desk to be removed.

## AUDIO VISUAL

### AV Playback Equipment and Projectors

Type	Model	Detail/Accessories	Total
Epson		Short Throw (normally mounted on Fly Line No. 8)	1
Mitsubishi	FL7000U	7500 ANSI Lumens	1
Panasonic	PT-DX 100	10,000 ANSI Lumens, Fixed Position	1
Hitachi	CP-X5021N	5000 ANSI Lumens	1

Type	Model	Detail/Accessories	Total
Fixed Cinema Screen		Fly Line No. 3	1
Portable Screen		Fly Line No. 24	1
Multi-Media Player	Denon DN 500BD		1
Vision Mixer	Roland VH 60D		1

#### Projector Rigging Points

Please discuss your projection requirements with the Technical Team Leader.

#### AV Cabling

QPT has a limited stock of AV cables, accessories and connections.

## BACKSTAGE

### Communications

We have an unranked proscenium arch stage with 39 single-purchase fly-line facilities.

#### Talkback

Master Unit:	Jands Clearcom System
Total Sub-stations:	2
Wireless Belt packs:	4
Talkback Patching located at:	SM Position, OP Fly Gallery, FOH Position

#### Paging/Show Replay

- Paging to all zones of the theatre through base stations with paging mics located from SM Desk and the lower foyer.
- Live video cast of show is available as Channel 103-3 on dressing room TV's.

#### Stage Monitor

Stage Monitor is connected to the Roland V60-HD vision mixer's MULTIVIEW output, this gives the SM stage camera vision as well as access to any laptops that have been input into the vision mixer.

#### Stage Camera

- Panasonic 4k UHD HC-WXF995M

## Dressing Rooms

Dressing Room	Capacity	Information
Dressing Room No. 1	16	All dressing rooms include toilet, shower, hand-basins, air-conditioning, mirror lighting and cloths racks.
Dressing Room No. 2	16	
Green Room/DR No. 3	20	All have access to closed-circuit Stage vision and internal broadcast facilities.
Basement Room	20	

### Greenroom (shared facility with Dressing Room No. 3)

- Tea/Coffee facilities YES
- Fridge/Freezer YES
- Microwave YES
- Water YES

## Laundry/Wardrobe

- Washing Machine 1
- Dryer 1
- Iron/Ironing Board 1
- Clothes Rack YES

## Stage Door/Artist Access

Stage door is located on the Maitland Street side of the building near the loading dock driveway.

## Building Plans

2D PFD and 2D DWG Building Plan files available on request

There is no 3D Vectorworks files

## ADDITIONAL FACILITIES AND INFORMATION

---

### Orchestral

- 1x Yamaha C50 Baby Grand Piano (please inform Technical Team Leader if you wish to use the piano prior to the performance date).
- 1x Upright Piano
- 10x Music Stands
- 5x sconce lights

### Venue

#### Address

- 75 Cathedral Avenue, Geraldton WA 6530
- Corner of Cathedral Avenue and Maitland Street, Geraldton WA 6530  
*See next page for Map*

### Loading Dock

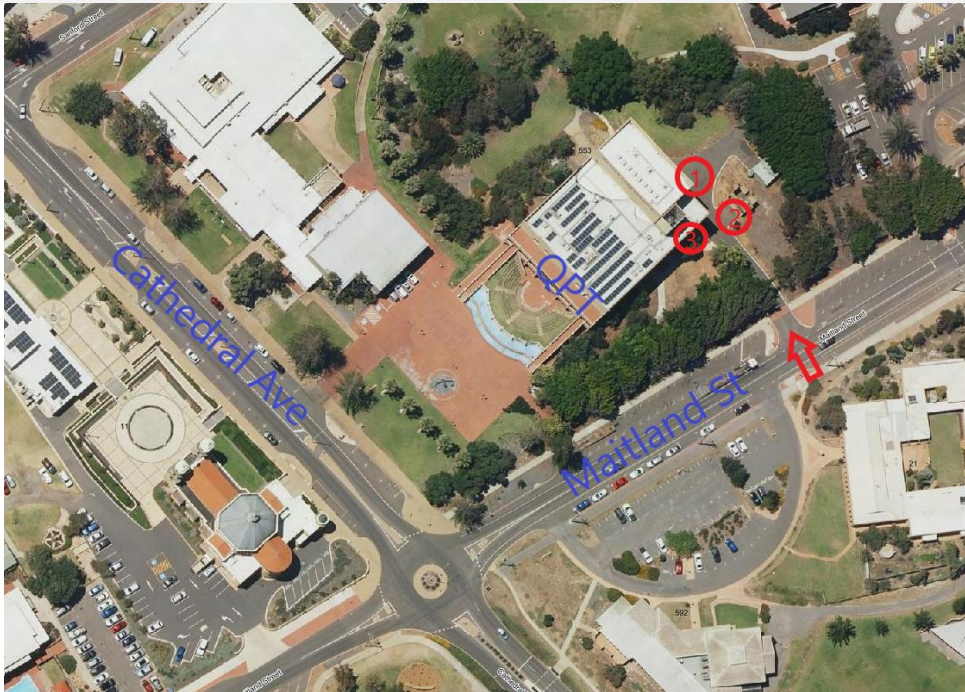
#### Access

- Loading dock delivery access via Maitland Street
- Semi-trailer access to be schedule with the Technical Team Leader prior to arrival.
- Loading Dock Height: 1.2m
- Door Dimensions: 4.7m High and 2.63m Wide



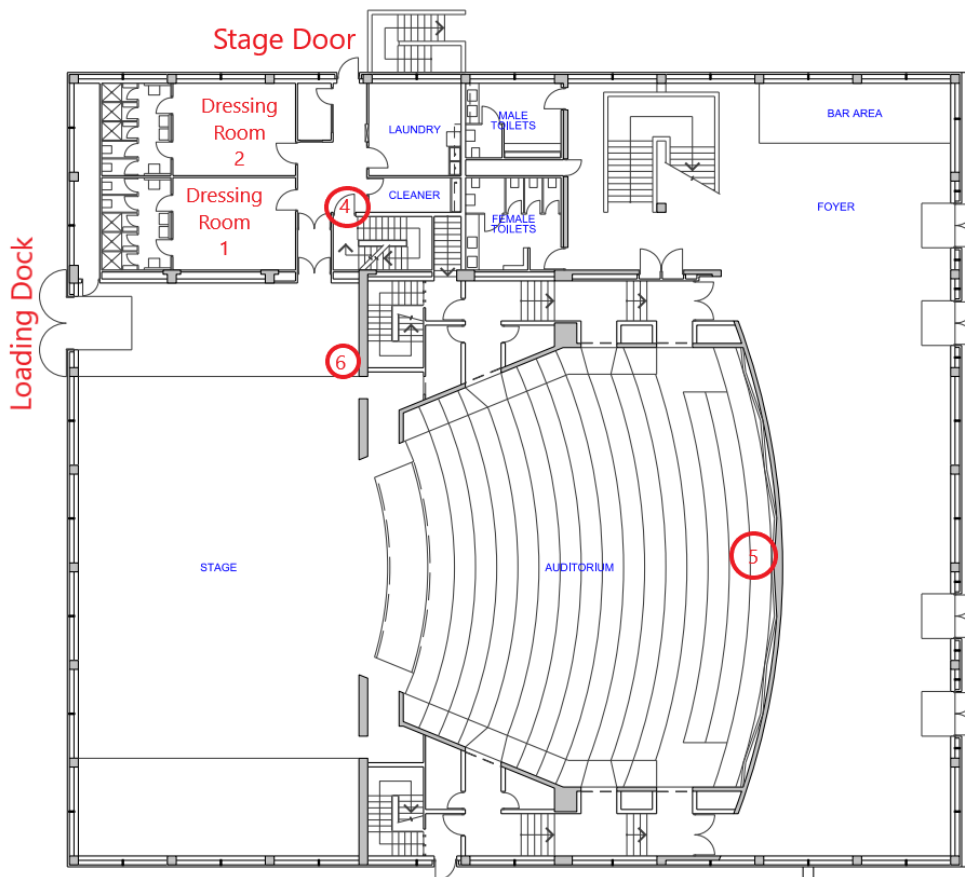
## Maps and layout

OPT map



1. Loading dock
2. Touring car spots
3. Stage door

OPT Building Layout



4. Upstairs to Green Room
5. Audio & Lighting Desk
6. Stage Manager Desk



## QUEENS PARK THEATRE TEAM CONTACT DETAILS

### Queens Park Theatre Team Leader

Name: Andrew Frith  
Phone Number: (08) 9956 6744  
Mobile: 0436 368 905  
Email Address: [AndrewF2@cgg.wa.gov.au](mailto:AndrewF2@cgg.wa.gov.au)

### Senior Theatre Technician

Name: Justin Larkin  
Phone Number: (08) 9956 6621  
Mobile: 0477 931 846  
Email Address: [JustinL@cgg.wa.gov.au](mailto:JustinL@cgg.wa.gov.au)

### Theatre Technician

Name:  
Phone Number:  
Mobile:  
Email Address:

### Treasury & Finance Officer

Name: Caroline Drogue  
Phone Number: (08) 9956 6625  
Email Address: [CarolineD@cgg.wa.gov.au](mailto:CarolineD@cgg.wa.gov.au)

### Box Office & Ticketing

Name: Gabrielle Bishop  
Phone Number: (08) 9956 6966  
Email Address: [gabrielleb@cgg.wa.gov.au](mailto:gabrielleb@cgg.wa.gov.au)

### Coordinator Events & Venues

Name: Simone Mahoney  
Phone Number: (08) 9956 6778  
Email Address: [SimoneM@cgg.wa.gov.au](mailto:SimoneM@cgg.wa.gov.au)

## Queens Park Theatre

PO Box 101 Geraldton WA 6531

Queens Park Theatre T 08 9956 6662 F 08 9956 6674

E [qpt@cgg.wa.gov.au](mailto:qpt@cgg.wa.gov.au) W [www.queensparktheatre.com.au](http://www.queensparktheatre.com.au)

## QPT06

Development and Community Services Department

TRIM REFERENCE

**D-20-041244**